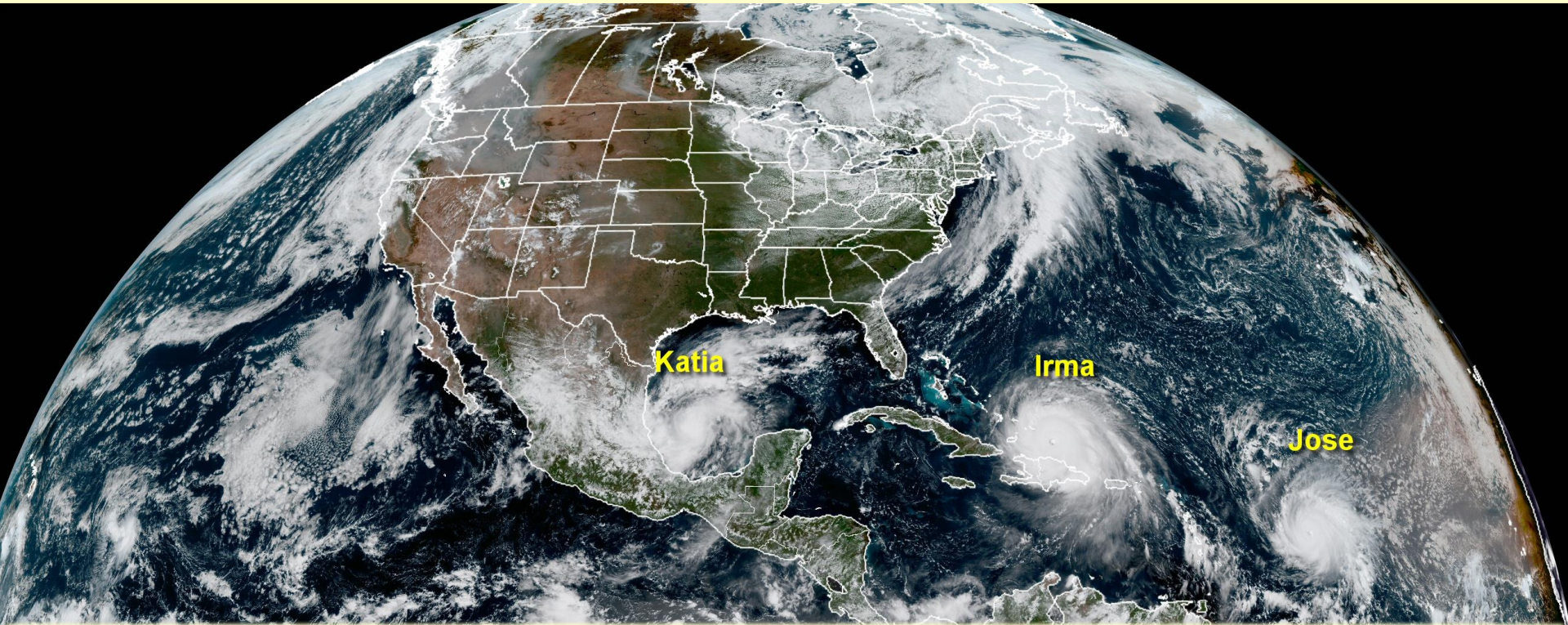


Weather links and images from Web Sites I use



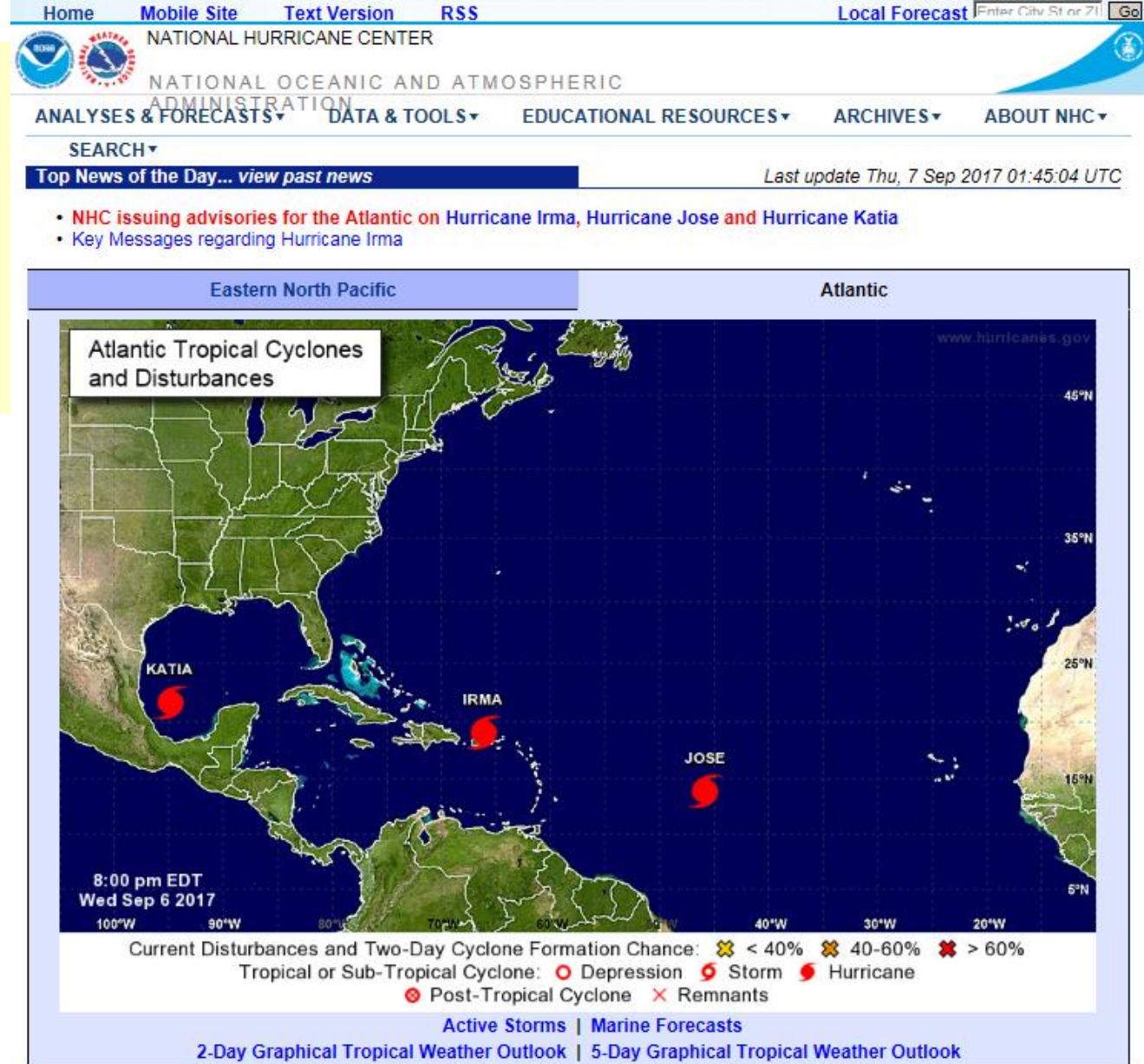
Bob Endlich

bendlich@msn.com

11 September 2017

<http://casf.diskstation.me/wordpress/>

National Hurricane Center



Atlantic - Caribbean Sea - Gulf of Mexico
Tropical Weather Outlook (en Español*)
800 PM EDT Wed Sep 6 2017

Tropical Weather Discussion
759 PM EDT Wed Sep 6 2017

☼ Hurricane Irma ☼

[Satellite](#) | [Buoys](#) | [Grids](#) | [Storm Archive](#)



...900 PM AST POSITION UPDATE... ...CORE OF IRMA PASSING JUST NORTH OF PUERTO RICO...

9:00 PM AST Wed Sep 6

<http://www.nhc.noaa.gov/>

National Hurricane Center

[Home](#) [Mobile Site](#) [Text Version](#) [RSS](#) [Local Forecast](#) [Enter City, St or ZIP](#) [Go](#)

  NATIONAL HURRICANE CENTER
NATIONAL OCEANIC AND ATMOSPHERIC
ADMINISTRATION

[ANALYSES & FORECASTS](#) [DATA & TOOLS](#) [EDUCATIONAL RESOURCES](#) [ARCHIVES](#) [ABOUT NHC](#)

SEARCH

[Top News of the Day... view past news](#) Last update Tue, 5 Sep 2017 22:06:33 UTC

- **NHC issuing advisories for the Atlantic on Hurricane Irma, TS Jose and TD Thirteen**
- [Key Messages regarding Hurricane Irma](#)

Eastern North PacificAtlantic

← Central Pacific

Eastern Pacific Tropical Cyclones and Disturbances

11:00 am PDT
Tue Sep 5 2017



www.hurricanes.gov

Current Disturbances and Two-Day Cyclone Formation Chance: < 40% 40-60% > 60%
Tropical or Sub-Tropical Cyclone: Depression Storm Hurricane
 Post-Tropical Cyclone Remnants

[Active Storms](#) | [Marine Forecasts](#)
[2-Day Graphical Tropical Weather Outlook](#) | [5-Day Graphical Tropical Weather Outlook](#)

Atlantic - Caribbean Sea - Gulf of Mexico
[Tropical Weather Outlook \(en Español*\)](#)
200 PM EDT Tue Sep 5 2017

[Tropical Weather Discussion](#)
150 PM EDT Tue Sep 5 2017

 **Hurricane Irma**  [Satellite](#) | [Buoys](#) | [Grids](#) | [Storm Archive](#)

...POTENTIALLY CATASTROPHIC CATEGORY 5 HURRICANE IRMA NEARING THE NORTHERN LEEWARD ISLANDS...
...WEATHER CONDITIONS WILL DETERIORATE OVER THE NORTHERN LEEWARD ISLANDS...

<http://www.nhc.noaa.gov/>

4:52 pm EDT
Tue Sep 5 2017

100°W 90°W 80°W 70°W 60°W 50°W 40°W 30°W 20°W 5°N

Current Disturbances and Two-Day Cyclone Formation Chance: ☼ < 40% ☼ 40-60% ☼ > 60%
Tropical or Sub-Tropical Cyclone: ○ Depression ☼ Storm ☼ Hurricane
☼ Post-Tropical Cyclone ☼ Remnants

[Active Storms](#) | [Marine Forecasts](#)

[2-Day Graphical Tropical Weather Outlook](#) | [5-Day Graphical Tropical Weather Outlook](#)

Atlantic - Caribbean Sea - Gulf of Mexico

[Tropical Weather Outlook \(en Español*\)](#)

200 PM EDT Tue Sep 5 2017

[Tropical Weather Discussion](#)

150 PM EDT Tue Sep 5 2017

☼ **Hurricane Irma** ☼

[Satellite](#) | [Buoys](#) | [Grids](#) | [Storm Archive](#)

...POTENTIALLY CATASTROPHIC CATEGORY 5 HURRICANE IRMA NEARING THE NORTHERN LEEWARD ISLANDS...
...WEATHER CONDITIONS WILL DETERIORATE OVER THE NORTHERN LEEWARD ISLANDS SOON...

5:00 PM AST Tue Sep 5

Location: 17.1°N 59.8°W

Moving: W at 15 mph

Min pressure: 926 mb

Max sustained: 185 mph

**Public
Advisory
#27**

500 PM AST

**Aviso
Publico*
#27**

500 PM AST

**Forecast
Advisory
#27**

2100 UTC

**Forecast
Discussion
#27**

500 PM AST

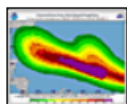
**Pronóstico
Discusión***
not
available

**Wind Speed
Probabilities
#27**

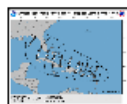
2100 UTC

**NWS Local
Products
537 PM AST**

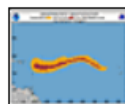
**US Watch/
Warning
453 PM EDT**



[Wind Speed
Probabilities](#)



[Experimental Arrival
Time of Winds](#)



[Wind
History](#)



[Warnings/Cone
Interactive Map](#)



[Warnings/Cone
Static Images](#)



[Warnings and
Surface Wind](#)

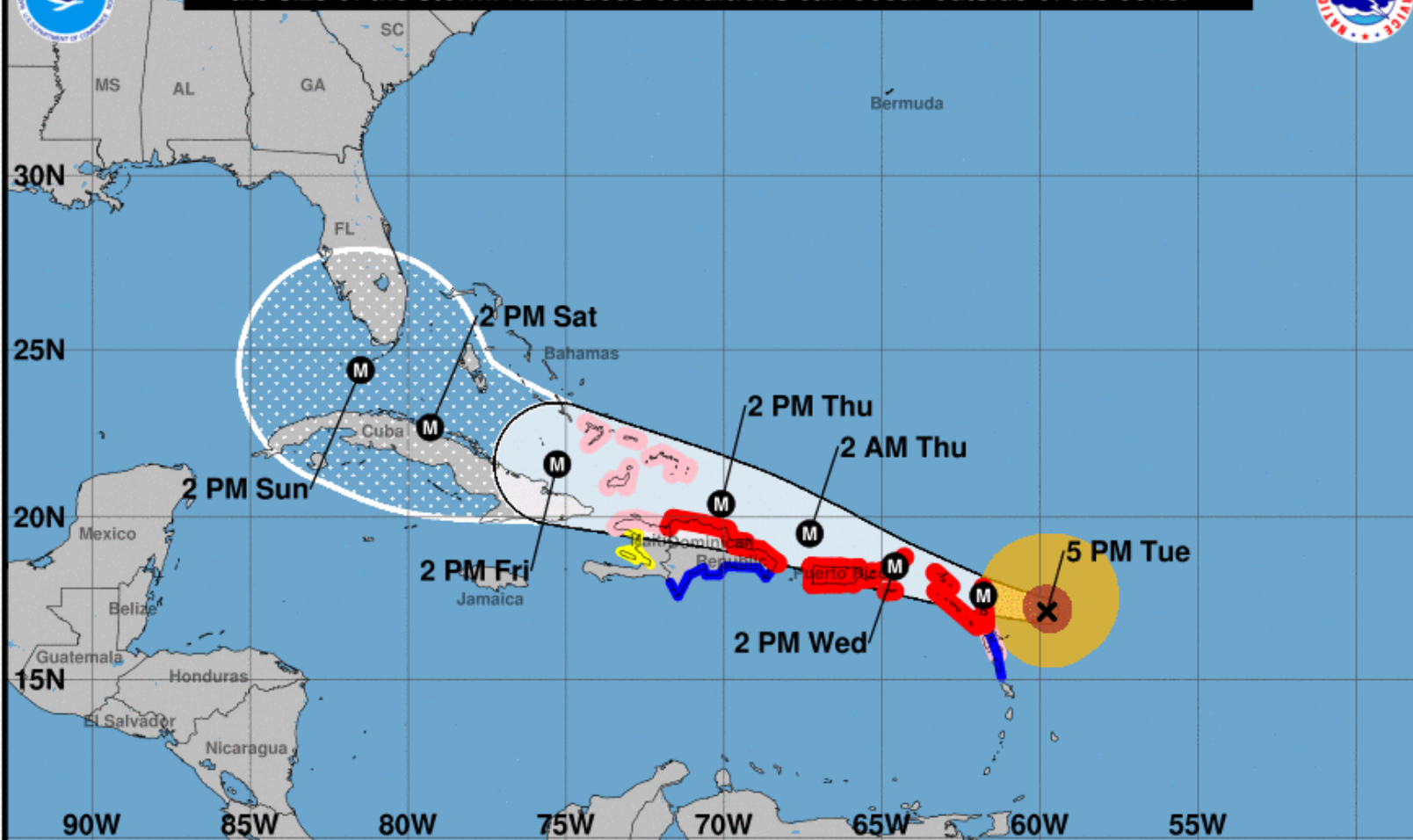
☼ **Tropical Storm Jose** ☼

[Satellite](#) | [Buoys](#) | [Grids](#) | [Storm Archive](#)

...JOSE GAINING STRENGTH IN THE CENTRAL TROPICAL ATLANTIC...



Note: The cone contains the probable path of the storm center but does not show the size of the storm. Hazardous conditions can occur outside of the cone.



Hurricane Irma

Tuesday September 05, 2017

5 PM AST Advisory 27

NWS National Hurricane Center

Current information: x

Center location 17.1 N 59.8 W

Maximum sustained wind 185 mph

Movement W at 15 mph

Forecast positions:

● Tropical Cyclone ○ Post/Potential TC

Sustained winds: D < 39 mph

S 39-73 mph H 74-110 mph M > 110 mph

Potential track area:

Day 1-3 Day 4-5

Watches:

Hurricane Trop Stm

Warnings:

Hurricane Trop Stm

Current wind extent:

Hurricane Trop Stm

* If the storm is forecast to dissipate within 3 days, the "Full Forecast" and "3 day" graphic will be identical

Interactive Map

Interactive Forecast Graphics and Coastal Watches/Warnings

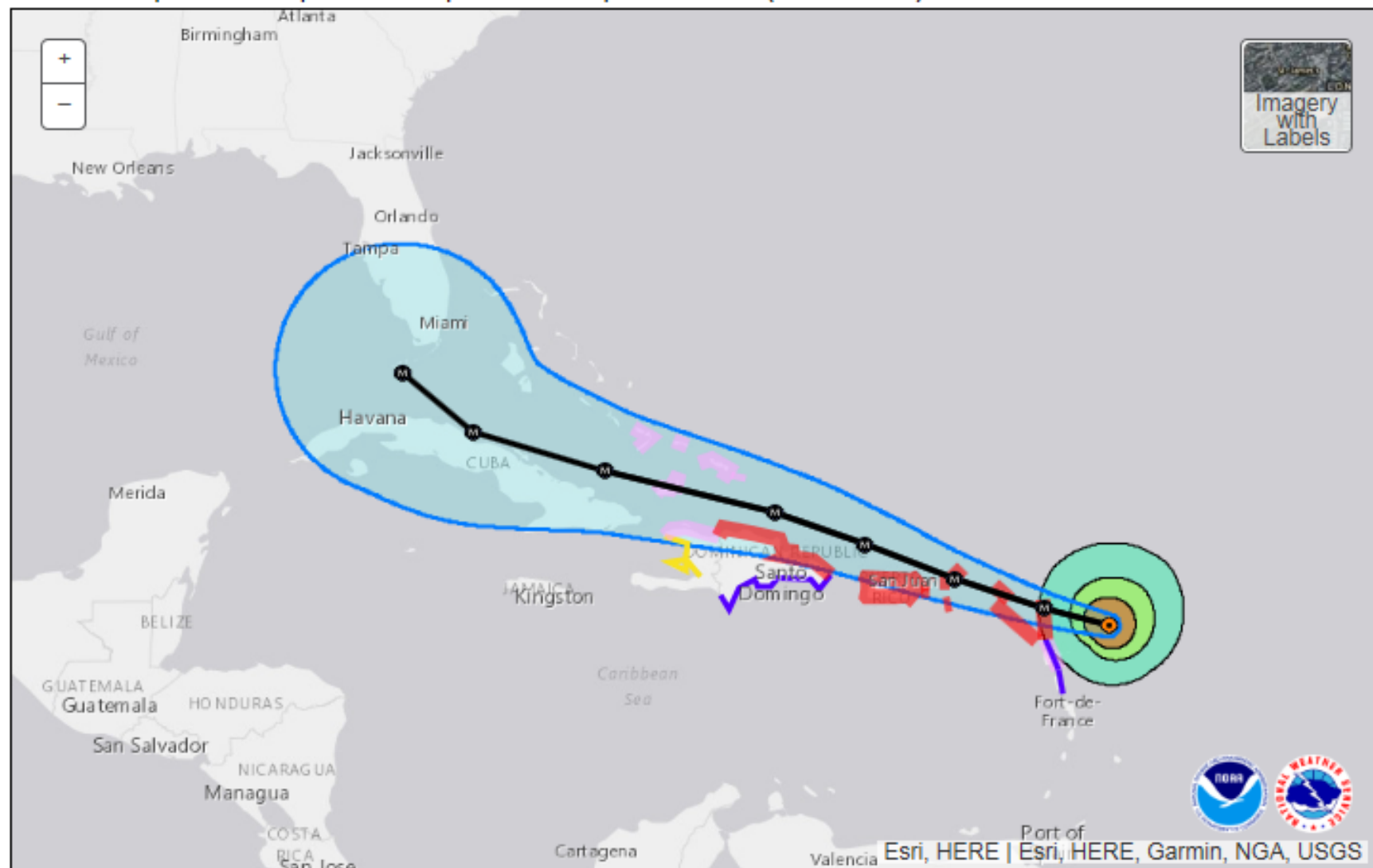
Hurricane Irma Advisory #027

5:00 pm AST Tue Sep 05, 2017

Select Advisory:

☒ Track | ☒ Cone | ☒ Wind Watches/Warnings | ☒ Storm Surge Watches/Warnings | ☒ Initial Wind Radii
☐ 34kt WSP | ☐ 50kt WSP | ☐ 64kt WSP | ☐ Past Track | ☒ Auto-Zoom (on cone load)

Clear Map



0 150 300mi

Mouse Lat/Lon: 9.9, -91.2

Interactive Map

Interactive Forecast Graphics and Coastal Watches/Warnings

Hurricane Irma Advisory #027

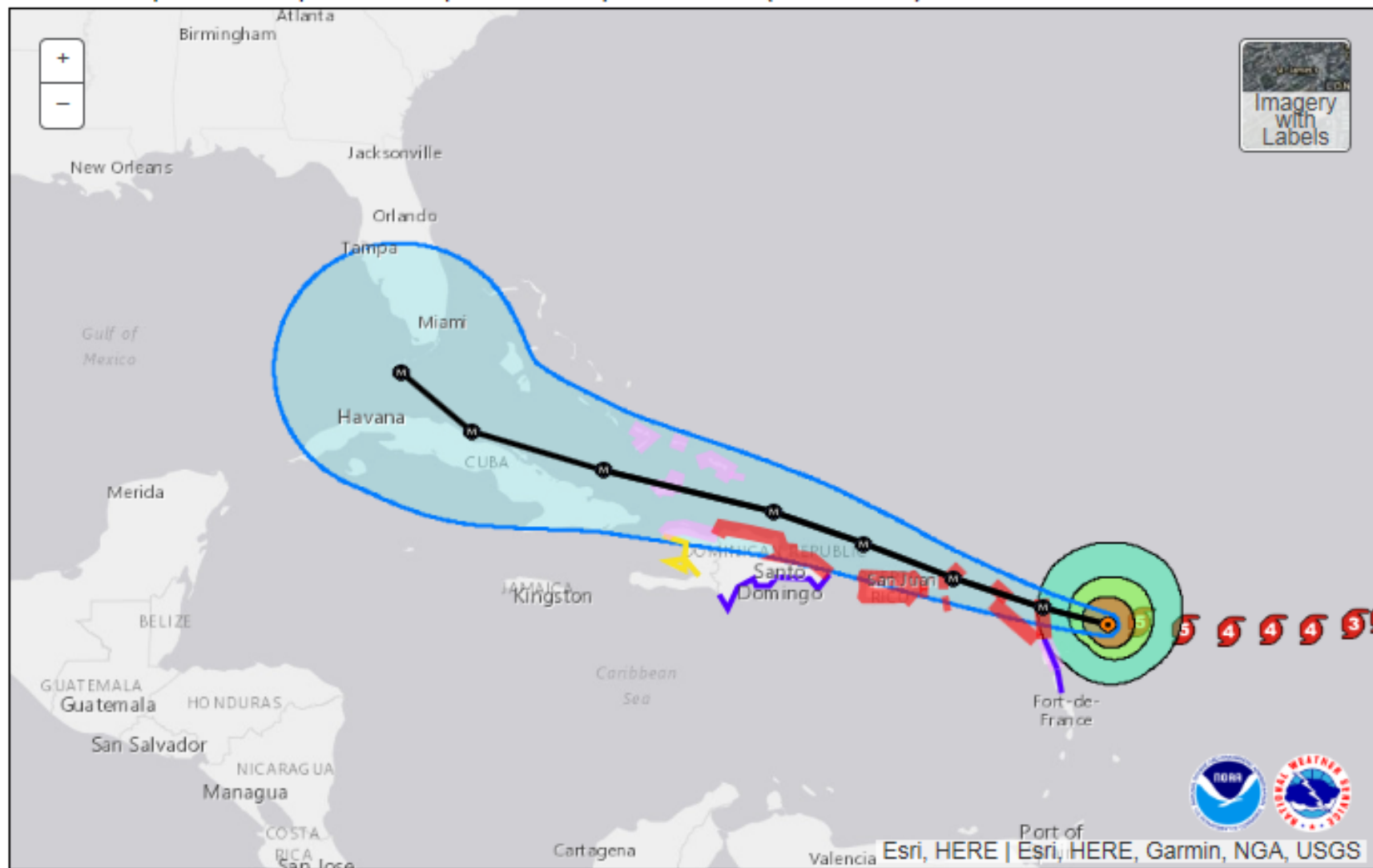
5:00 pm AST Tue Sep 05, 2017

Select Advisory: Advisory #027

☒ Track | ☒ Cone | ☒ Wind Watches/Warnings | ☒ Storm Surge Watches/Warnings | ☒ Initial Wind Radii

☐ 34kt WSP | ☐ 50kt WSP | ☐ 64kt WSP | ☒ Past Track | ☒ Auto-Zoom (on cone load)

Clear Map



0 150 300mi

Mouse Lat/Lon: 10.5, -91.7

Interactive Map

Interactive Forecast Graphics and Coastal Watches/Warnings

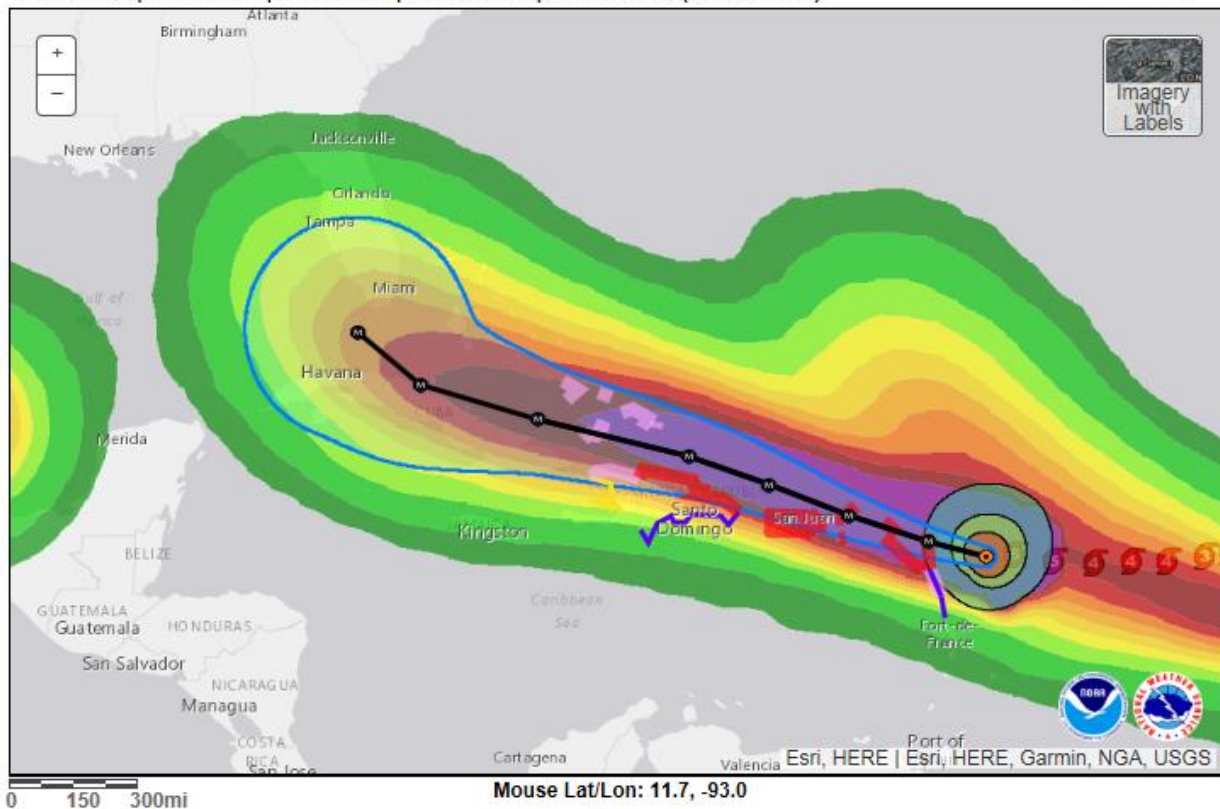
Hurricane Irma Advisory #027

5:00 pm AST Tue Sep 05, 2017

Select Advisory:

☒ Track ☒ Cone ☒ Wind Watches/Warnings ☒ Storm Surge Watches/Warnings ☒ Initial Wind Radii
☒ 34kt WSP ☐ 50kt WSP ☐ 64kt WSP ☒ Past Track ☒ Auto-Zoom (on cone load)

Clear Map



Legend

Current Center Location	Watches / Warnings:	Initial Extent of Winds:
Forecast Center Locations:	Tropical Storm Watch	> 39 mph
Tropical/Subtropical Cyclone	Tropical Storm Warning	> 58 mph
Potential/Post-tropical Cyclone	Hurricane Watch	> 74 mph
Forecast Sustained Winds:	Hurricane Warning	Past Track :
M > 110 mph H 74 - 100 mph	Storm Surge Watch	Potential / Post-tropical
S 39 - 73 mph D < 39 mph	Storm Surge Warning	Tropical Depression
Potential track area	5-day chance of receiving sustained winds:	Tropical Storm
		Hurricane

[Download GIS Data](#)
[Past Track in KMZ](#)

http://www.nhc.noaa.gov/refresh/graphics_at1+shtml/154010.shtml?gm_track#contents

Interactive Map

Interactive Forecast Graphics and Coastal Watches/Warnings

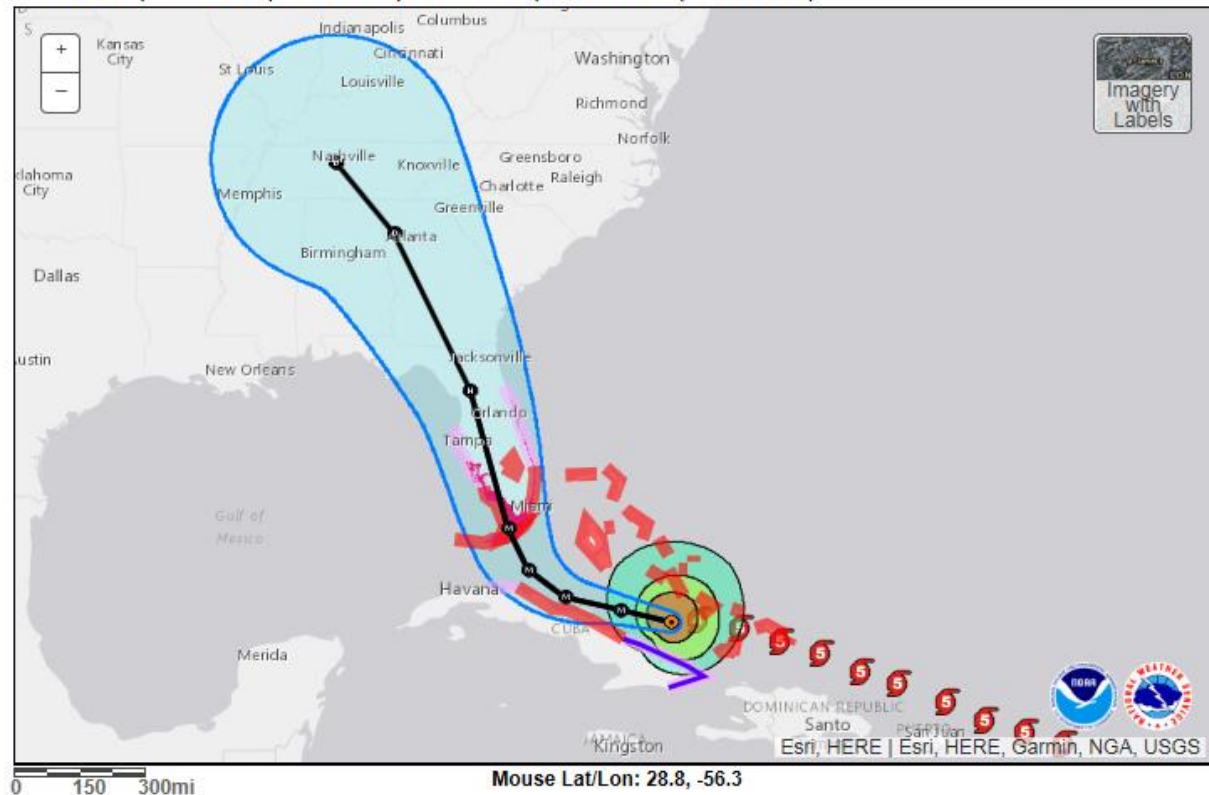
Hurricane Irma Advisory #038

11:00 am EDT Fri Sep 08, 2017

Select Advisory:

☒ Track ☒ Cone ☒ Wind Watches/Warnings ☒ Storm Surge Watches/Warnings ☒ Initial Wind Radii
☐ 34kt WSP ☐ 50kt WSP ☐ 64kt WSP ☒ Past Track ☒ Auto-Zoom (on cone load)

Clear Map



Legend

<p> Current Center Location</p> <p>Forecast Center Locations:</p> <p> Tropical/Subtropical Cyclone</p> <p> Potential/Post-tropical Cyclone</p> <p>Forecast Sustained Winds:</p> <p>M > 110 mph H 74 - 100 mph</p> <p>S 39 - 73 mph D < 39 mph</p>	<p>Watches / Warnings:</p> <p> Tropical Storm Watch</p> <p> Tropical Storm Warning</p> <p> Hurricane Watch</p> <p> Hurricane Warning</p> <p> Storm Surge Watch</p> <p> Storm Surge Warning</p>	<p>Initial Extent of Winds:</p> <p> > 39 mph</p> <p> > 58 mph</p> <p> > 74 mph</p>
<p> Potential track area</p>	<p>5-day chance of receiving sustained winds:</p> <p></p>	<p>Past Track :</p> <p> Potential / Post-tropical</p> <p> Tropical Depression</p> <p> Tropical Storm</p> <p> Hurricane</p>

Download GIS Data
Past Track in KMZ

ZCZC MIATCDAT1 ALL
TTAA00 KNHC DDHHMM

<http://www.nhc.noaa.gov/text/refresh/MIATCDAT1+shtml/112036.shtml?>

Hurricane Irma Discussion Number 27 NWS
National Hurricane Center Miami FL AL112017 500 PM AST Tue Sep 05 2017

Irma continues to exhibit a remarkably impressive satellite presentation. The intensity was increased to 160 kt on the 1800 UTC intermediate public advisory based on a couple of SFMR winds of 160 kt measured in the northeastern eyewall by the Air Force aircraft just prior to that time.

The minimum pressure measured by a dropsonde in the eye was 926 mb. Irma becomes only the fifth Atlantic basin hurricane with a peak wind speed of 160 kt or higher.

The others are Allen (1980), the Labor Day Hurricane of 1935, Gilbert (1988), and Wilma (2005).

The eye of Irma is within range of the Meteo France radar in the northeastern Caribbean, and recent images show the development of an outer eyewall, likely the beginning stages of an eyewall replacement. These changes in inner-core structure will likely result in fluctuations in intensity during the next couple of days.

Otherwise, increasing upper-ocean heat content and a very favorable upper-level pattern are expected to allow Irma to remain a category 4 or 5 hurricane during the next several days.

Once again, the NHC forecast shows limited interaction of the hurricane with the islands of the Greater Antilles.

Fixes from the latest satellite and radar imagery suggest that Irma is moving a little north of due west or 280/13 kt.

A strong ridge extending southwestward from the central Atlantic is expected to steer Irma west-northwestward during the couple of days. A large mid-latitude trough over the eastern United States is forecast to lift northeastward, allowing the ridge to build westward and keep Irma on a westward to west-northwestward heading through Friday.

Over the weekend, a shortwave trough diving southward over the east-central U.S. is expected to weaken the western portion of the ridge, causing Irma to turn poleward. The dynamical model guidance is in good agreement through 72 hours, but there is increasing spread thereafter.

The HWRF, UKMET, and ECMWF show a more southerly track and a sharper turn around day 5, while the GFS is farther north and east late in the period. The NHC track is near a consensus of these models and close to the HFIP corrected consensus.

Users are reminded to not focus on the exact forecast track, especially at the longer ranges, since the average NHC track errors are about 175 and 225 statute miles at days 4 and 5, respectively.

KEY MESSAGES:

1. Irma is a potentially catastrophic category 5 hurricane and will bring life-threatening wind, storm surge, and rainfall hazards to portions of the northeastern Leeward Islands tonight and tomorrow.

These hazards will spread into the Virgin Islands and Puerto Rico tomorrow.

Preparations should be rushed to completion before the arrival of tropical-storm force winds tomorrow morning in Virgin Islands and Puerto Rico.

2. A hurricane warning is in effect for the northern coast of the Dominican Republic, with hurricane watches for Haiti, the southeastern Bahamas and the Turks and Caicos.

Irma is likely to bring dangerous wind, storm surge, and rainfall to these areas from Wednesday night through Friday.

3. Irma could directly affect the remainder of the Bahamas and Cuba as an extremely dangerous major hurricane later this week. Residents in these areas should monitor the progress of Irma and listen to advice given by officials.

4. The chance of direct impacts from Irma beginning later this week and this weekend from wind, storm surge, and rainfall continues to increase in the Florida Keys and portions of the Florida Peninsula.

However, it is too soon to specify the timing and magnitude of these impacts.

FORECAST POSITIONS AND MAX WINDS

INIT 05/2100Z 17.1N 59.8W 160 KT 185 MPH

12H 06/0600Z 17.6N 61.8W 155 KT 180 MPH

24H 06/1800Z 18.5N 64.6W 150 KT 175 MPH

36H 07/0600Z 19.5N 67.3W 145 KT 165 MPH

48H 07/1800Z 20.4N 70.1W 140 KT 160 MPH

72H 08/1800Z 21.6N 75.3W 135 KT 155 MPH

96H 09/1800Z 22.7N 79.3W 125 KT 145 MPH

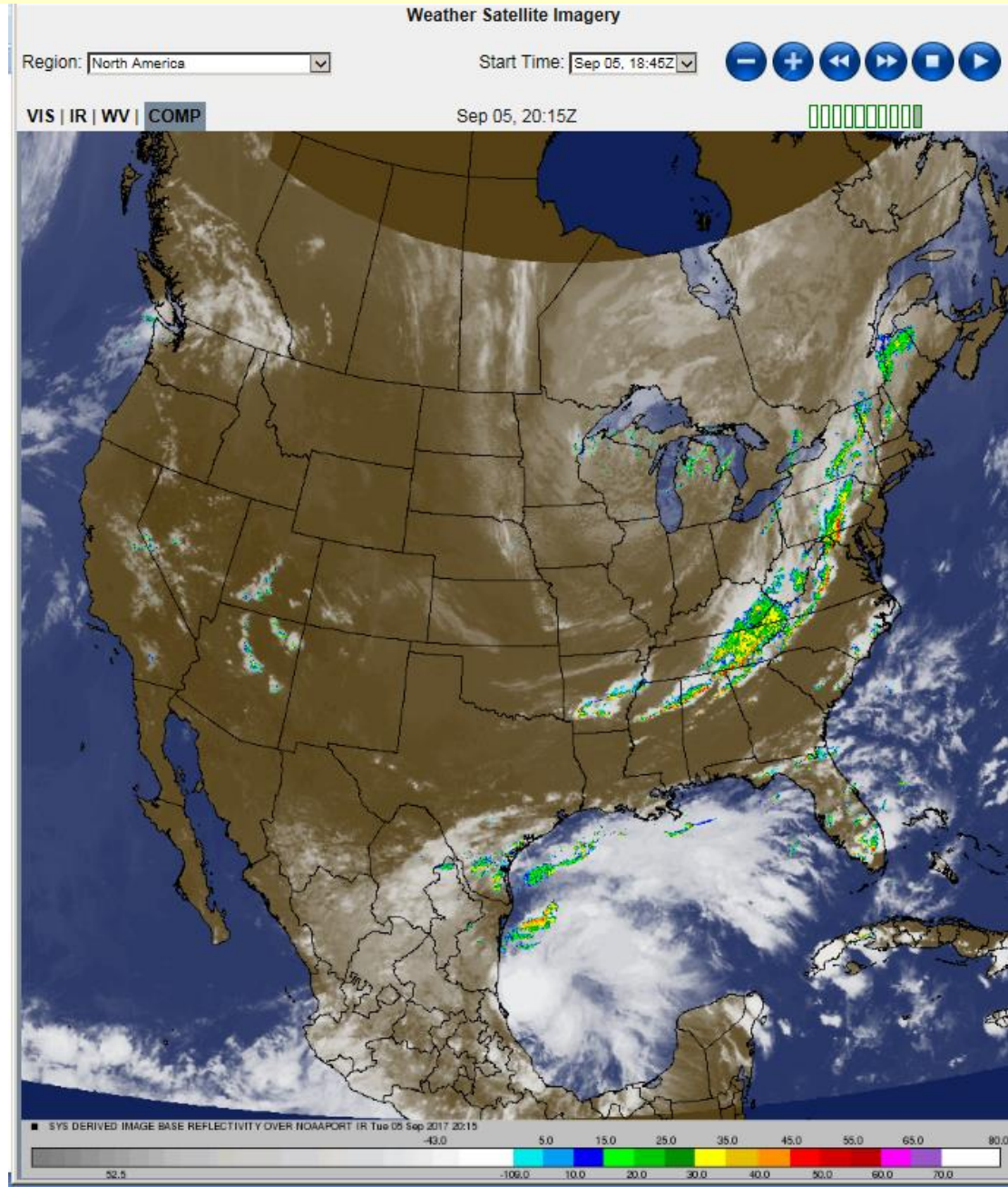
120H 10/1800Z 24.4N 81.5W 120 KT 140 MPH

\$\$

Forecaster Brown

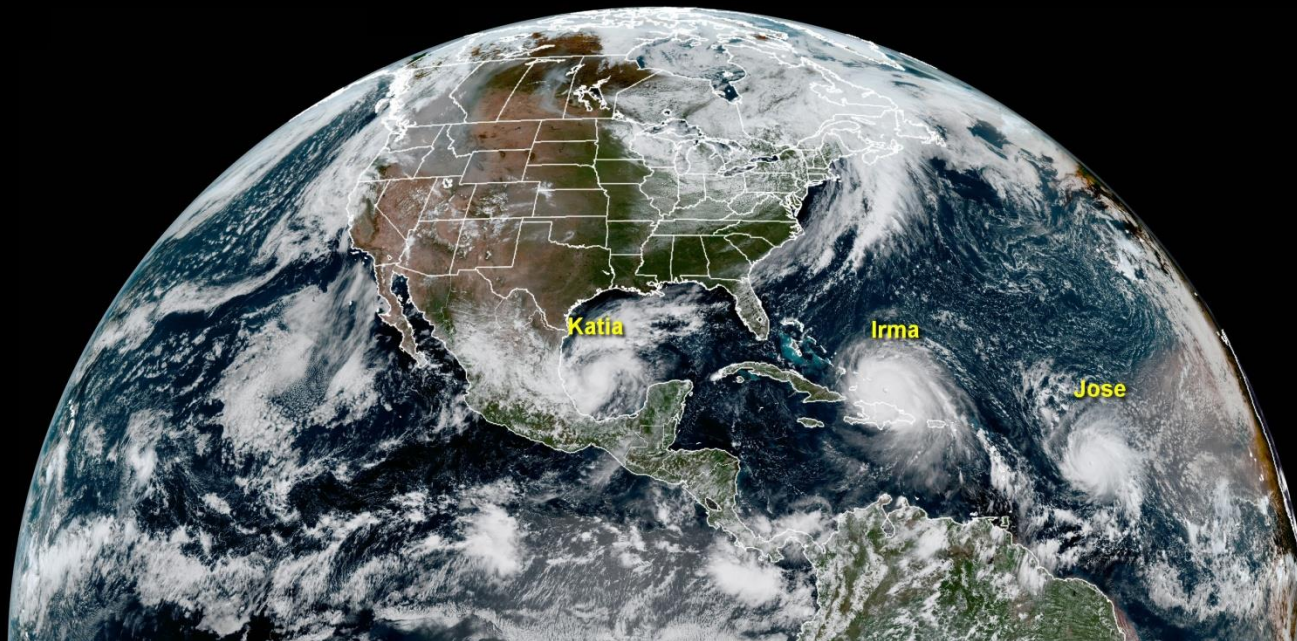
NNNN

http://wxweb.meteostar.com/models/noaaport_loop.php?PATH=/var/www/leads_images/satellite/SYS/COMP/

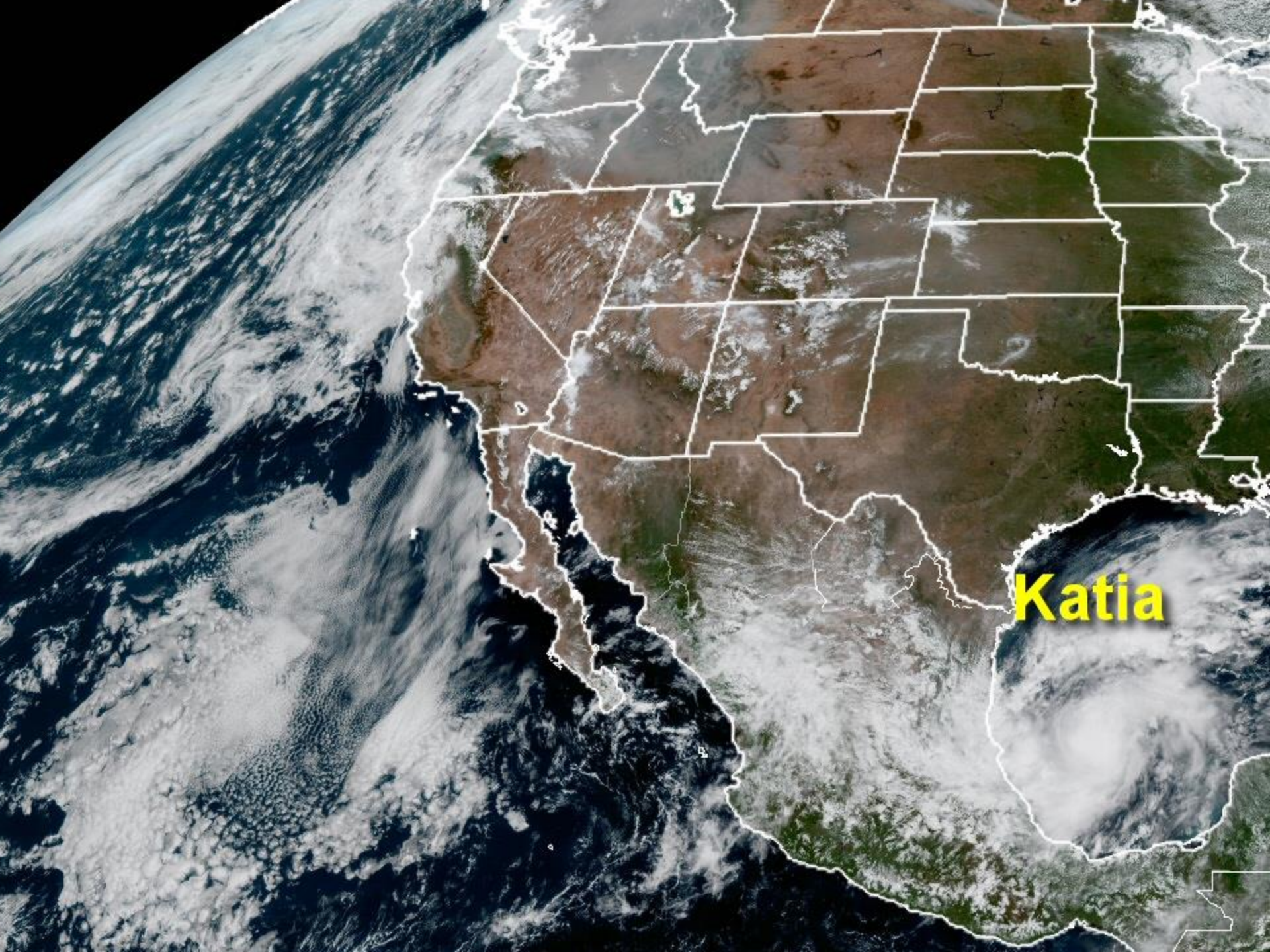


<https://wattsupwiththat.com/2017/09/07/beauty-and-the-beasts-hurricanes-katia-irma-and-jose-in-one-spectacular-image/>

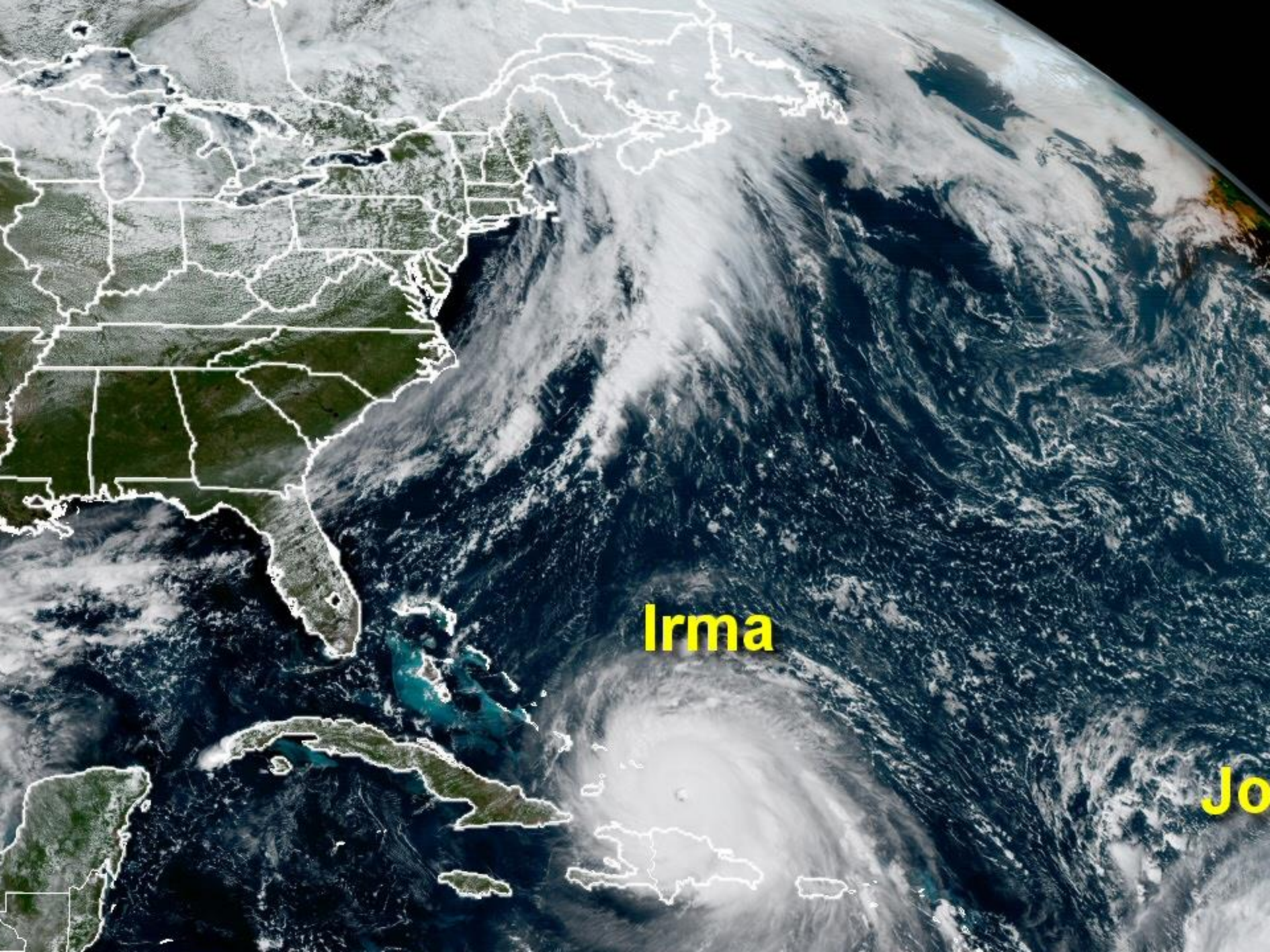
NOAA GOES-16 18:30 UTC 09-07-2017



WUWT



Katia

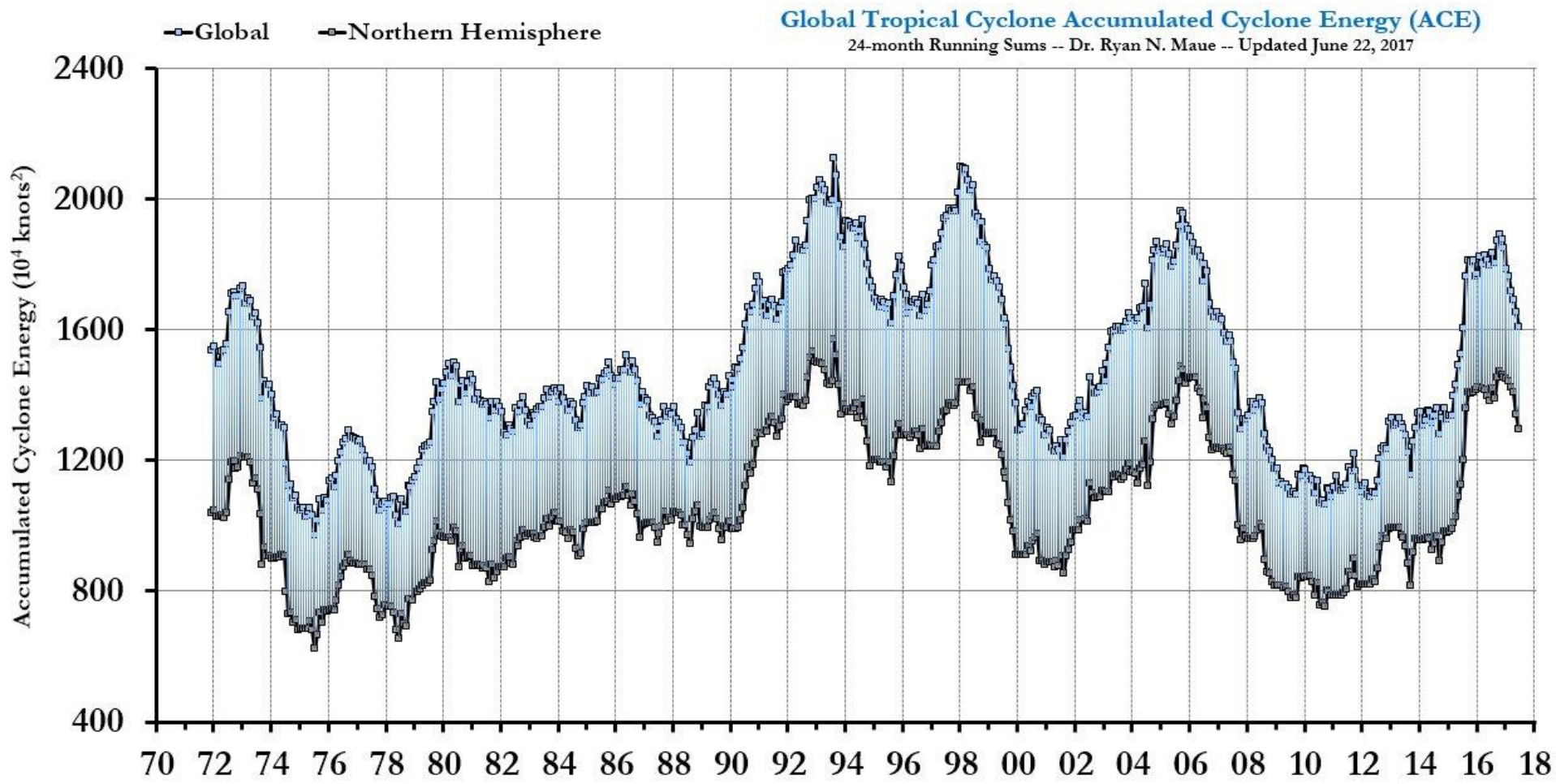


Irma

Jo

<https://twitter.com/RyanMaue/status/880480054689628160>

<http://polclimate.com/tropical/>

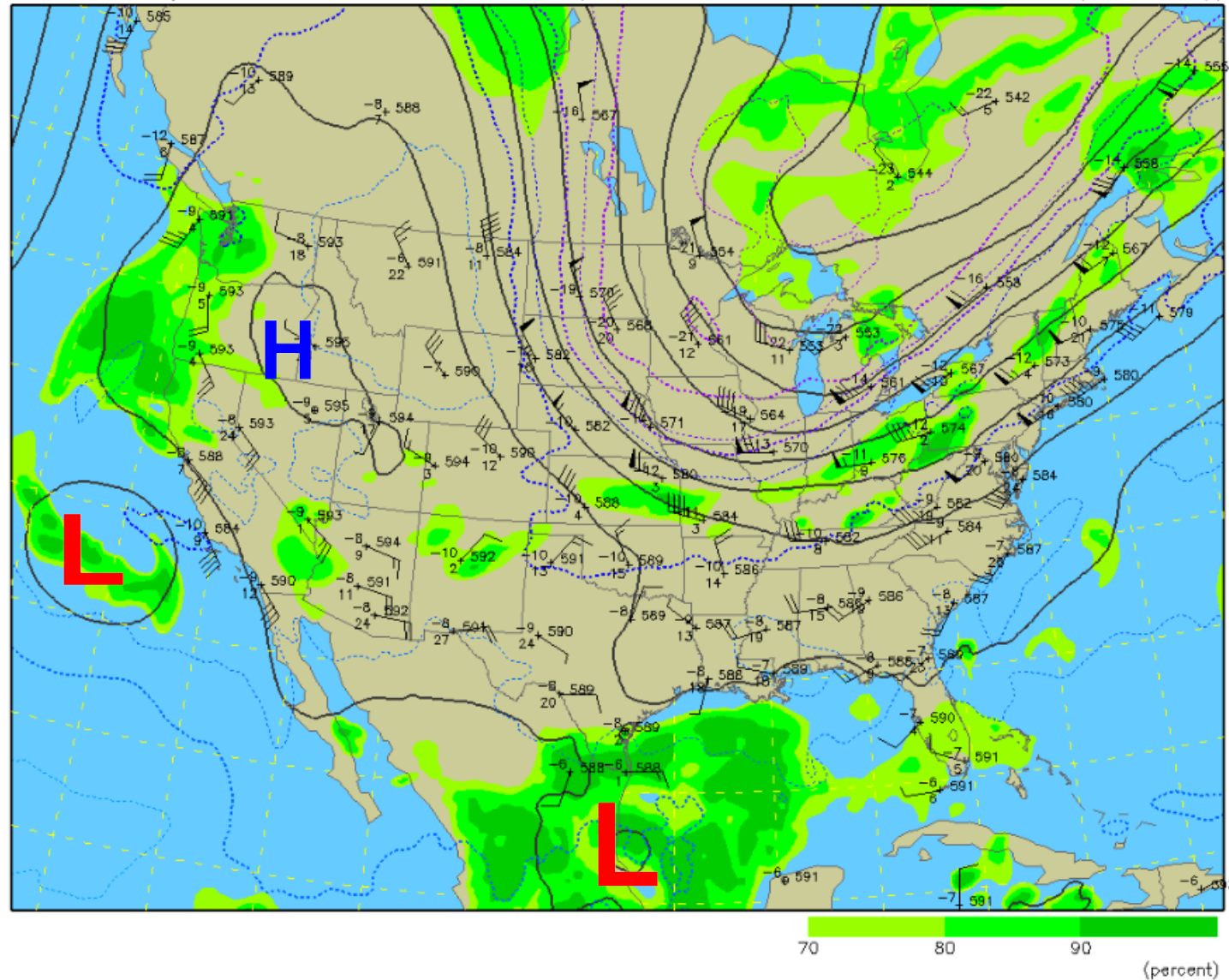


500 mb rawinsonde data 12z Tue 05 Sep 2017

500 mb Heights (dm) / Temperature (°C) / Humidity (%)

0-hour analysis valid 1200 UTC Tue 05 Sep 2017

RAP (12z 05 Sep)

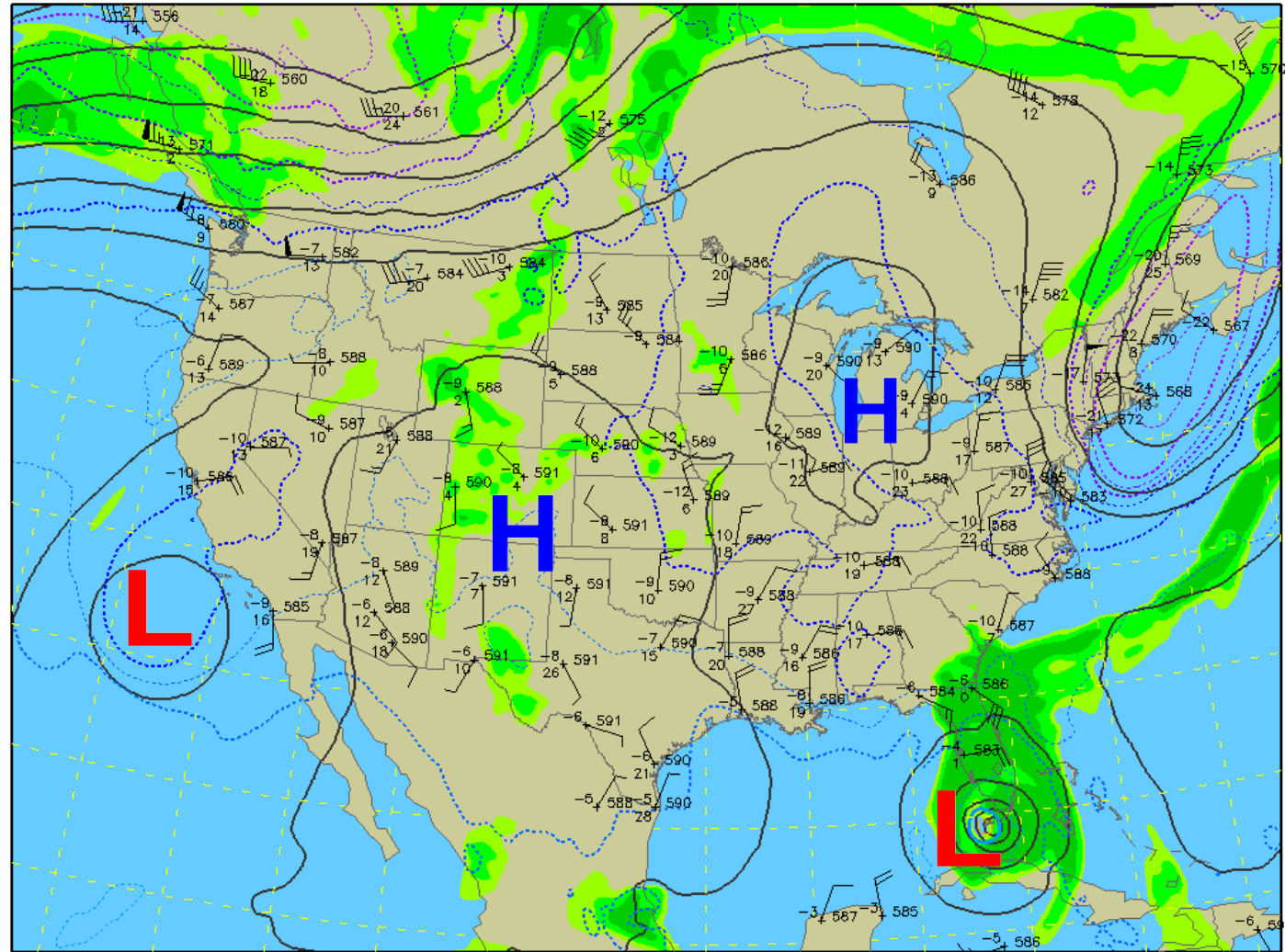


500 mb rawinsonde data 12z Sun 10 Sep 2017

500 mb Heights (dm) / Temperature ($^{\circ}\text{C}$) / Humidity (%)

0-hour analysis valid 1200 UTC Sun 10 Sep 2017

RAP (12z 10 Sep)



70 80 90 (percent)

Black lines:

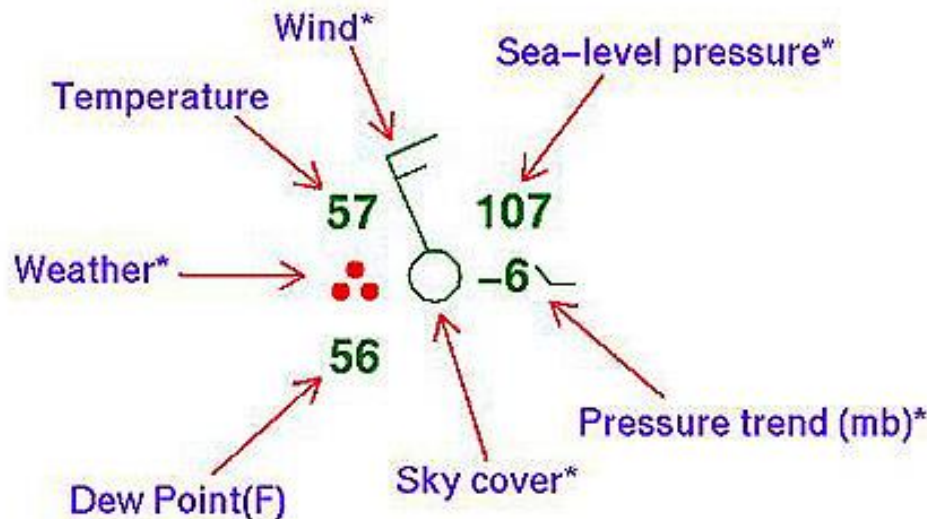
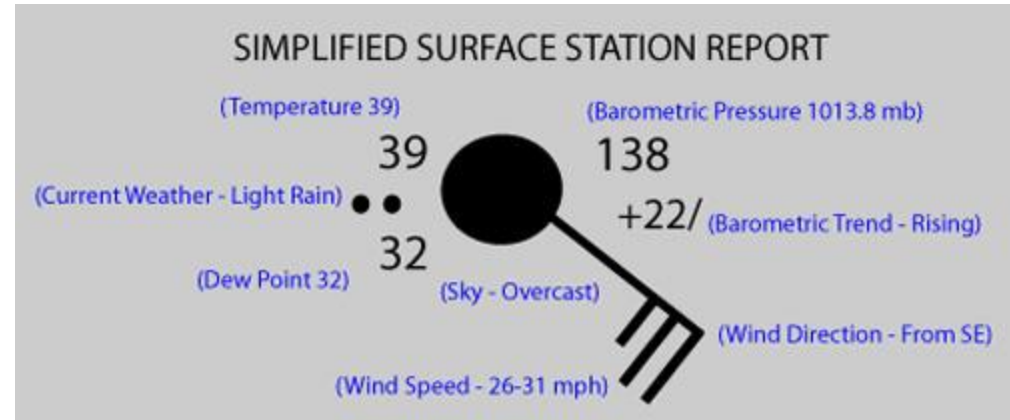
Contours of the
HEIGHT of the
500 millibar surface

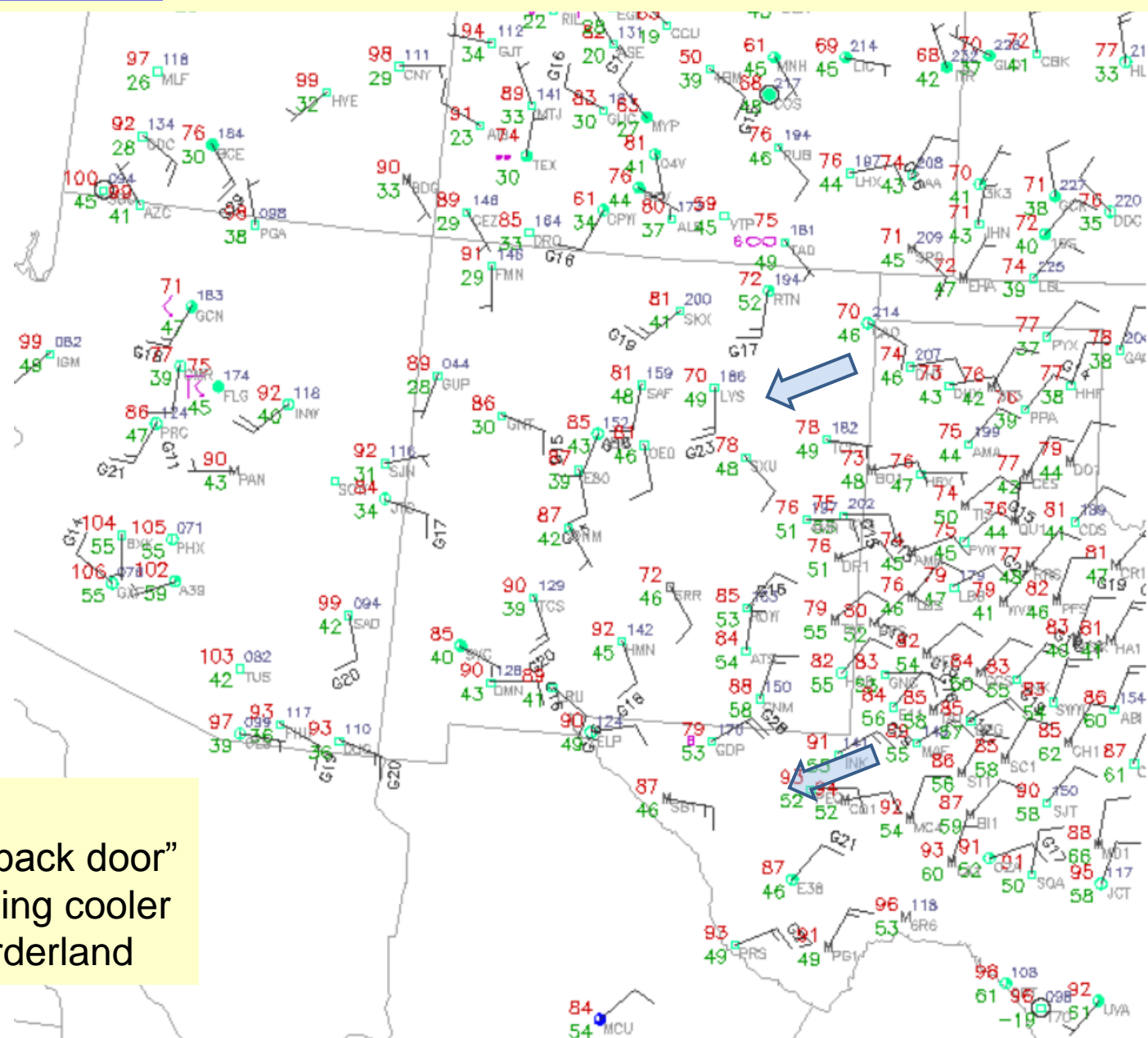
594 = 5940 Meters
588 = 5880 Meters

Dotted Lines:


Temperatures at
500 millibars.

Surface weather observations are plotted on a map in this stylistic manner:





Blue arrows:
Early season “back door”
cool front bringing cooler
air into the borderland

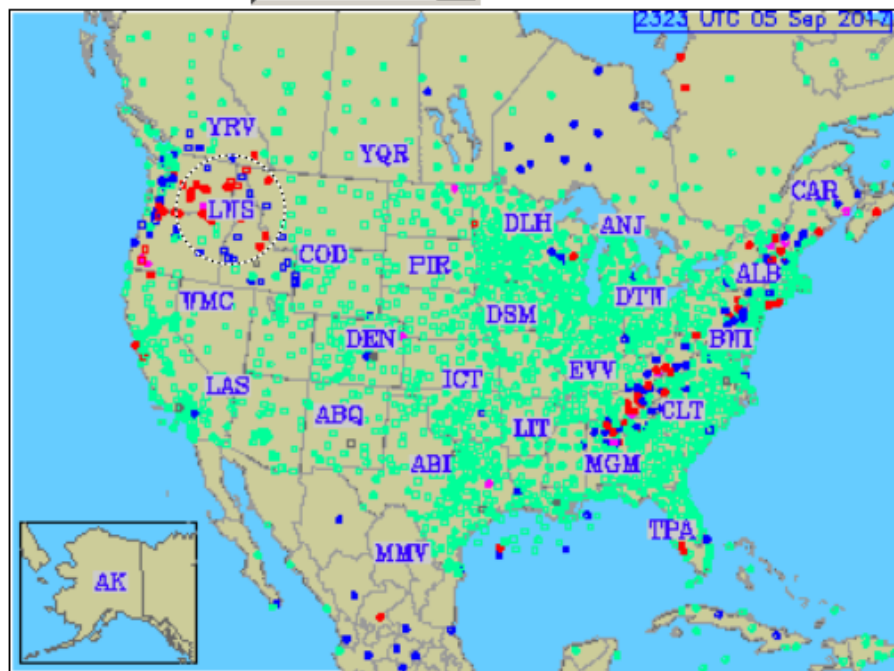
The National Center for Atmospheric Research
Operated by the University Corporation for Atmospheric Research

NCAR RAL Real-Time Weather Data

Home / RAL : [Weather Home](#) [Satellite](#) [Radar](#) [Surface](#) [Upper-Air](#) [Forecast](#)

Help for this page

End date:
End time:
Loop duration:



Interactive METARs Java applet or large version.

Tornado alley overlay at

Text observat

Retrieve text format METAR
See [stations.txt](#) for a list o
Enter 4-letter ICAO id(s):

☒ Raw ☐ Translated

Contour ma

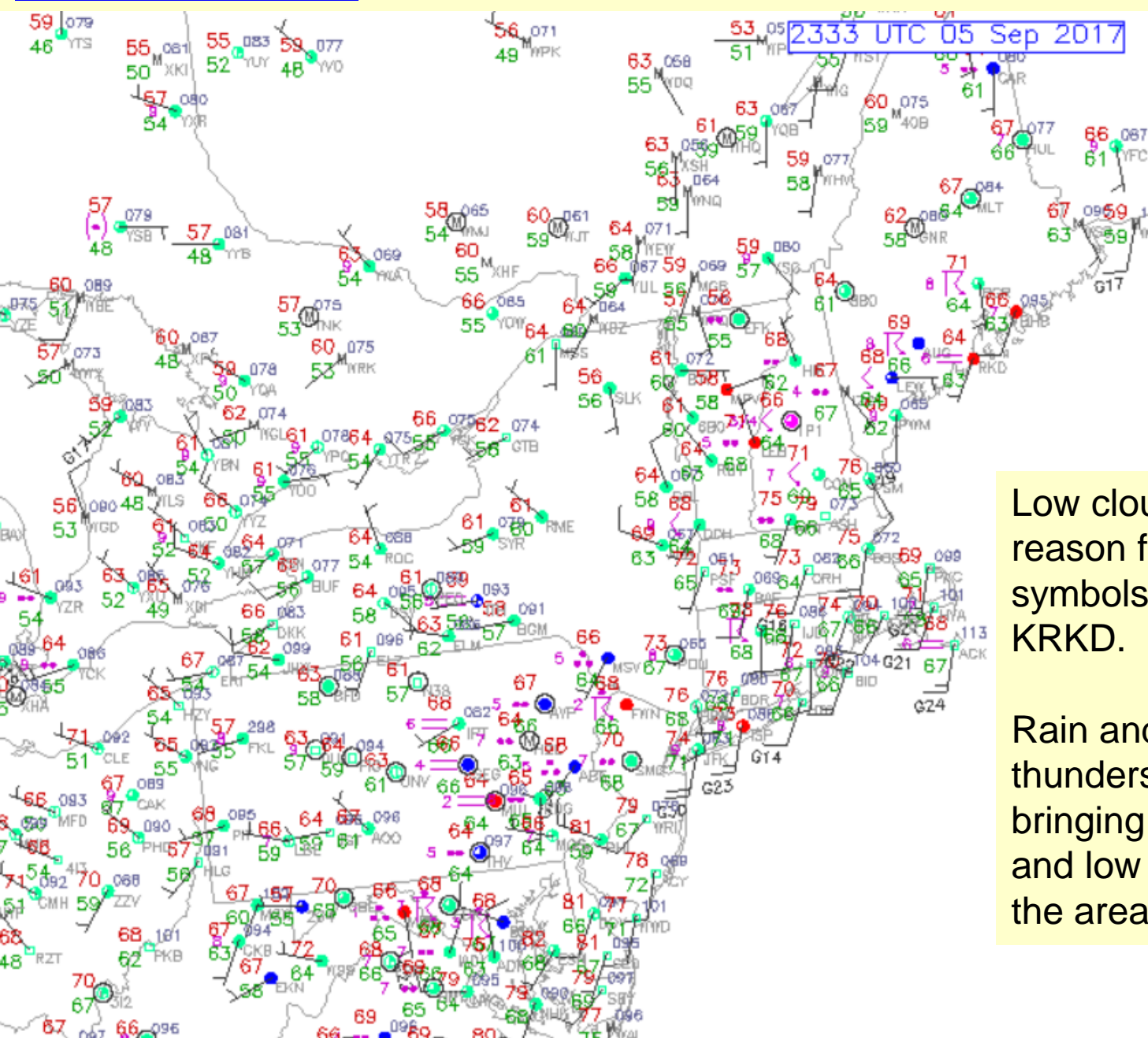
- Temperature
- Moisture (dewpoint)
- Winds/Sea-Level Pressu
- 4-panel plot
- Theta-E

- 24-hour Precipitation
- U.S. Snow Depth (Air Fo
- N. Hemi Snow Depth (Ai
- U.S. Snow Cover (NOAA
- N. Hemi Snow Cover (N

Surface plots from other internet sources

Local Weatl

<http://weather.rap.ucar.edu/surface/displaySfc.php?region=alb&endDate=20170905&endTime=-1&duration=0>



Low clouds were the reason for the red station symbols at KBHB and KRKD.

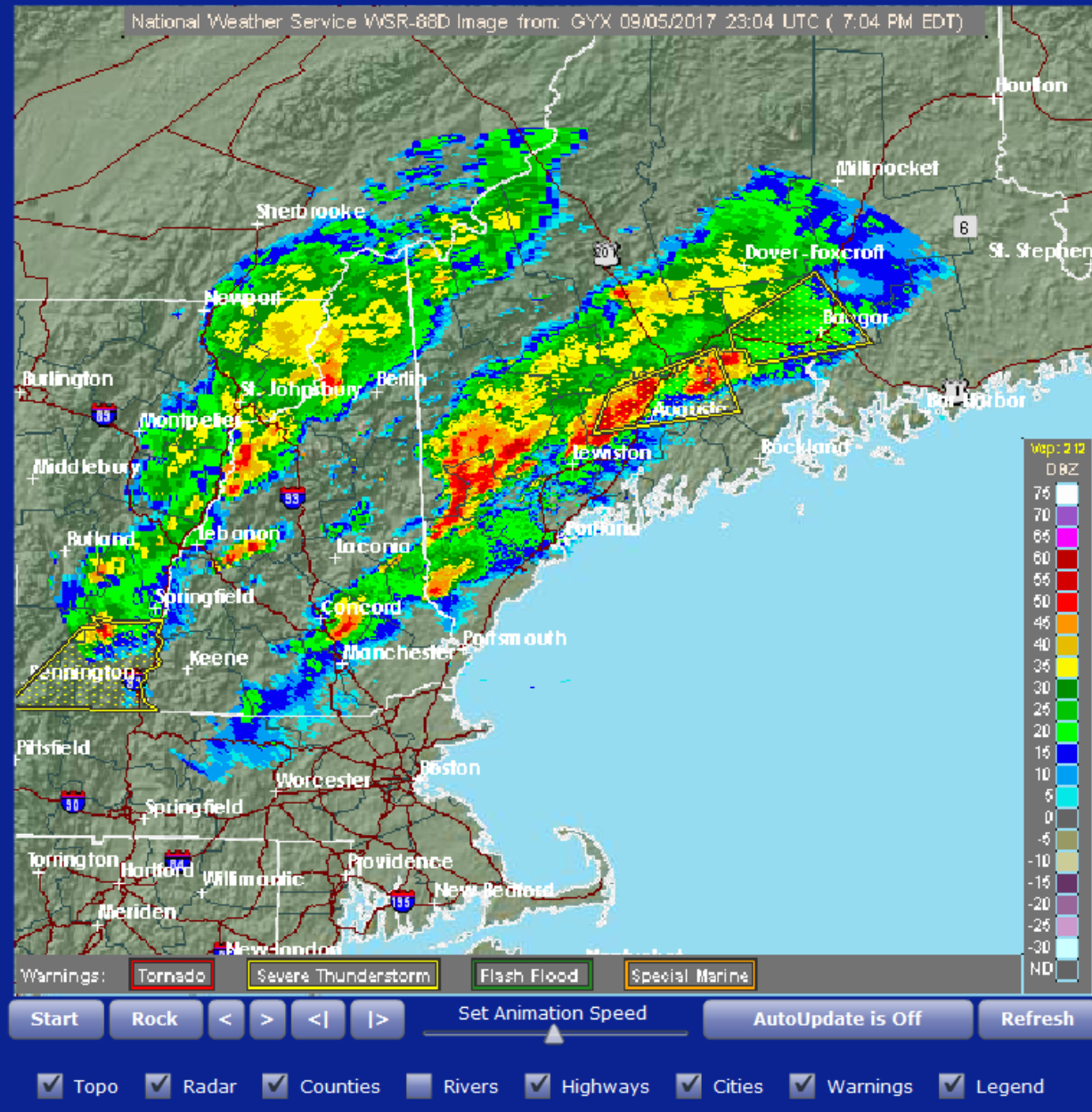
Rain and embedded thunderstorms were bringing low clouds and low visibilities the area.

Composite Reflectivity

NWS Portland, ME

07:04 PM EDT Tue Sep 05 2017

National Weather Service WSR-88D Image from: GYX 09/05/2017 23:04 UTC (7:04 PM EDT)



<https://radar.weather.gov/ridge/radar.php?product=NCR&rid=gyx&loop=yes>

Portland ME, Weather Radar shows the embedded rainshowers and thunderstorms.



National Weather Service Enhanced Radar Image

Puerto Rico/Virgin Islands Radar



Go to: Standard Version

Local weather forecast by "City, St"

Adjacent Radars:

Short Range
Images

Reflectivity:

Composite Loop
Base Loop

Velocity:

Storm Loop
Relative Loop
Base Loop

Rainfall:

1-Hour Loop
Total Loop
Storm Loop
Total LoopMouseOver Off Long Range
Images

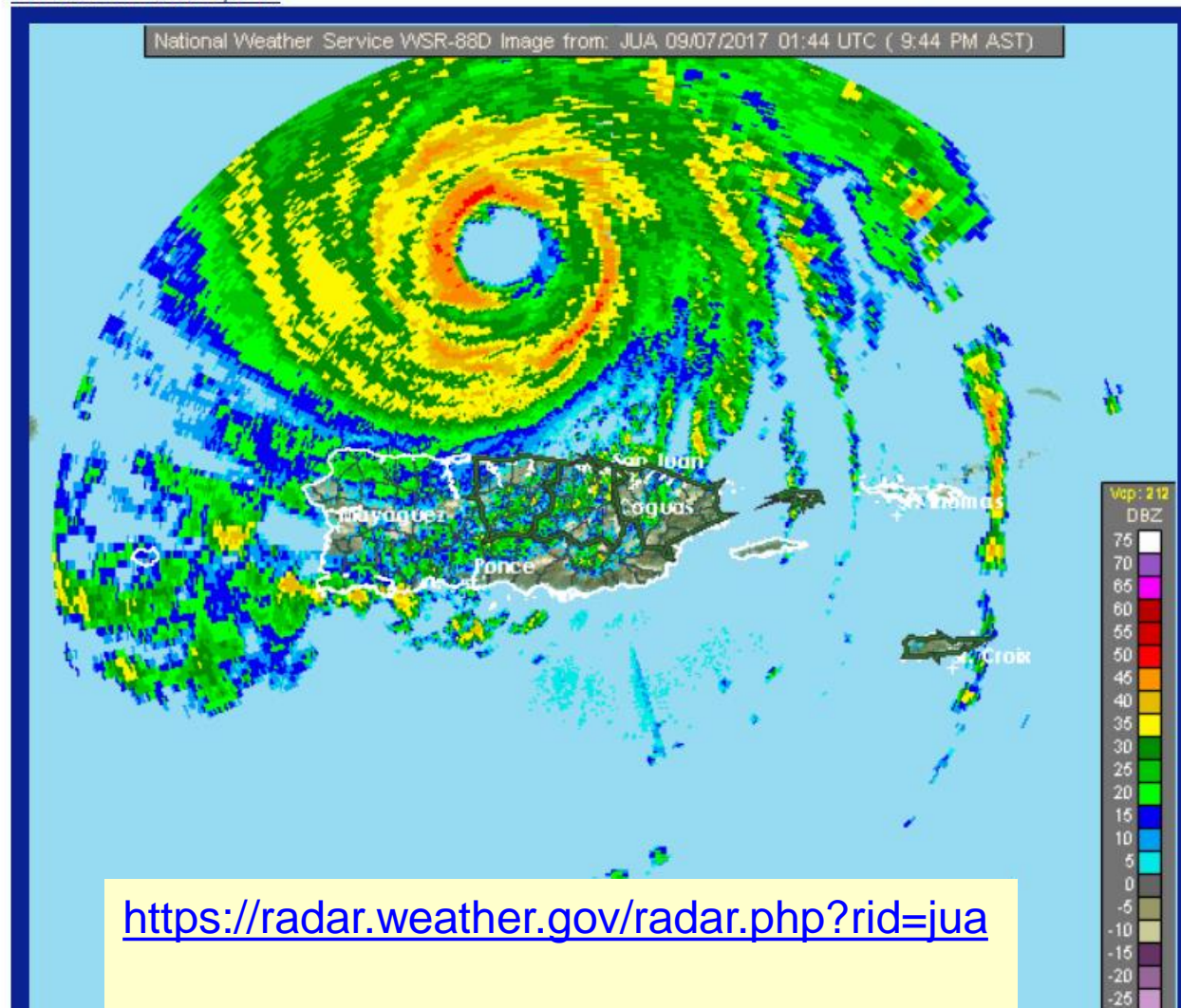
Reflectivity:

Base Loop

<http://www.noaa.gov/>

Base Reflectivity

NWS San Juan, PR

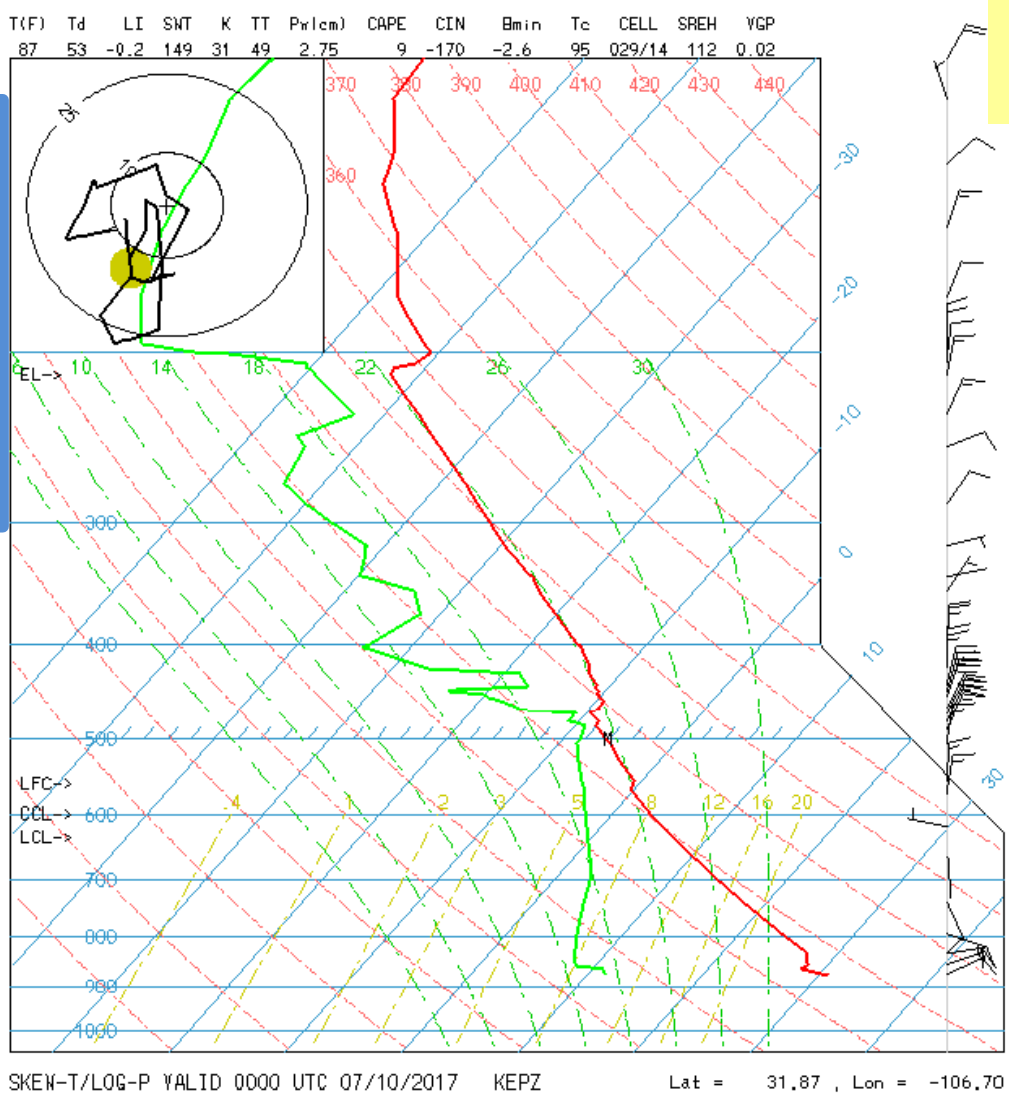
<https://radar.weather.gov/radar.php?rid=jua>

“Graph paper” for Meteorologists

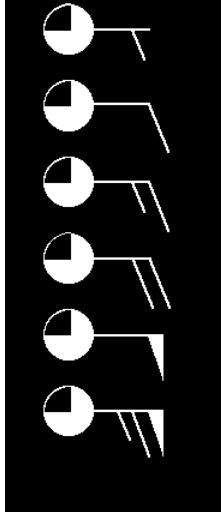
Also in Blue
in the Vertical
Pressures decrease
logarithmically

The GREEN LINE
is the Dew Point
temperature
from the same
sounding.

The RED line is
the temperature
from the weather
balloon sounding



Skewed Temperatures in Blue

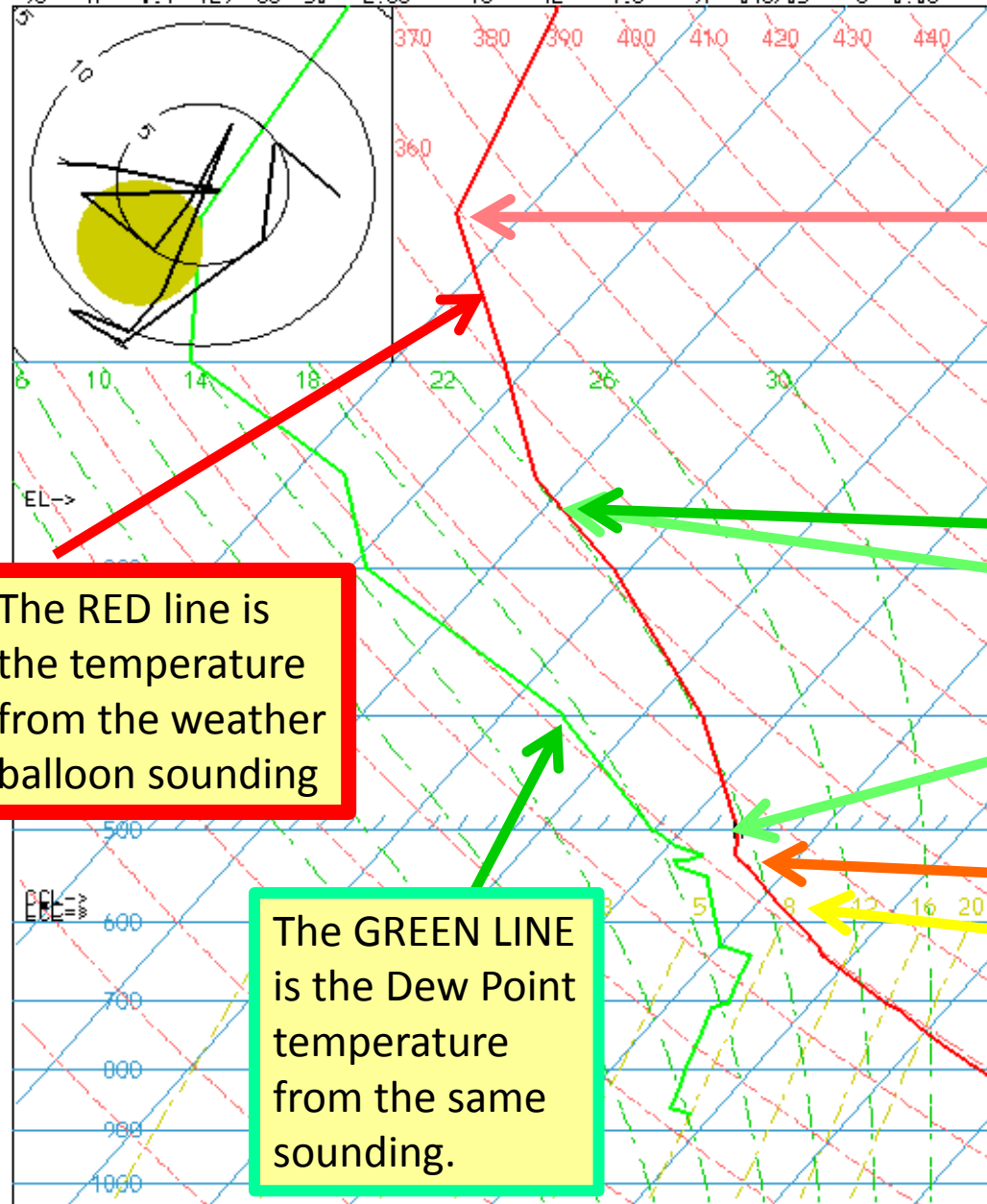


- 5 Knots
- 10 Knots
- 15 Knots
- 20 Knots
- 50 Knots
- 65 Knots

The Skew-T allows easy calculation of dozens of thermodynamic variables

11 July's evening Sounding

T(F) Td LI SWT K TT Pw(m) CAPE CIN Bmin Tc CELL SREH VGP
96 47 -0.1 129 33 50 2.68 13 -42 -1.8 97 046/05 8 0.03



Str atosphere, above Tropopause

Probable Tropopause

Cloud Top; no longer moist adiabatic abv

Cloud Layer:
Moist Adiabatic

Cloud Base: Min Temperature-
Dewpoint Depression

Planetary Boundary
Layer ~ Dry Adiabatic

Surface Layer Superadiabatic

The RED line is
the temperature
from the weather
balloon sounding

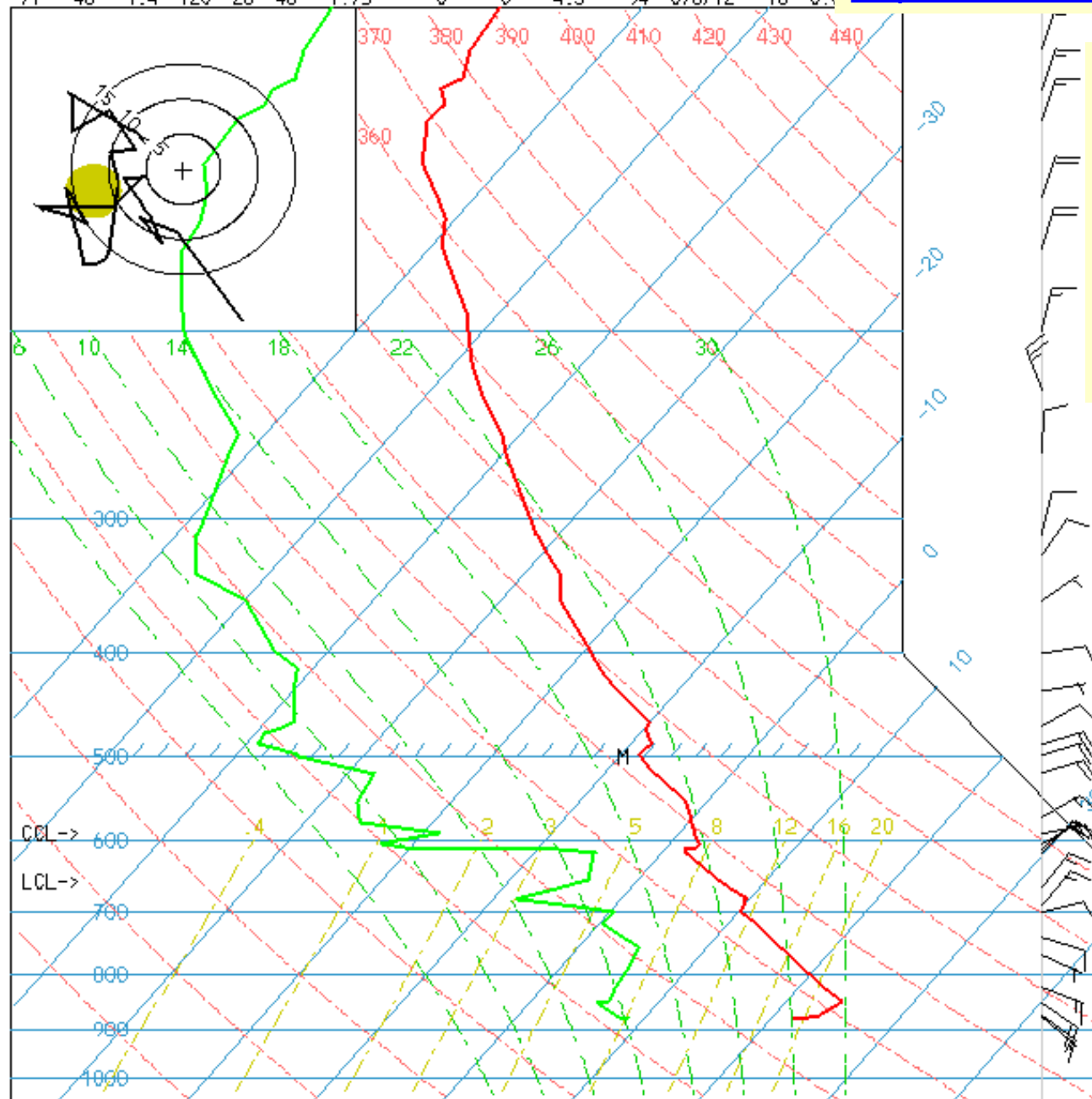
The GREEN LINE
is the Dew Point
temperature
from the same
sounding.

SKEW-T/LOG-P VALID 0000 UTC 07/11/2017 KEPZ

Lat = 31.87 , Lon = -106.70

T(F) Td LI SWT K TT Pw(1cm) CAPE CIN Bmin Tc CELL SREH VV
 71 48 1.4 120 28 46 1.75 0 0 -4.3 94 076/12 16 0.1

<http://weather.rap.ucar.edu/upper/epz.gif>



SKEW-T/LOG-P VALID 1200 UTC 09/05/2017 KEYZ

Lat = 31.87 , Lon = -106.70

High Tropopause
(Summertime.)

Very cold temperatures
in the Stratosphere.
Abv 55,000 Ft MSL
Temps colder than -60C!

Dry, then Very Dry
above 13,000 Ft

Subsidence Inversions
from
Ridge of High Pressure
in the mountain West.

Easterly Winds =
Monsoon Flow.



National Weather Service National Head

National Weather Service

[Home](#)

[Site Map](#)

[News](#)

[Organization](#)

Search for:

Local forecast
by
"City, St" or Zip

Code

[XML](#) [RSS](#)
Feeds

Area Forecast Discussion

Issued by NWS

[Current Version](#) | [Previous Version](#) | [Text Only](#) | [Print](#) | [Product List](#) | [Glossary Off](#)

Versions: [1](#) [2](#) [3](#) [4](#) [5](#) [6](#) [7](#) [8](#) [9](#) [10](#) [11](#) [12](#) [13](#) [14](#)

000

FXUS64 KEPZ 052133

AFDEPZ

Area Forecast Discussion

National Weather Service El Paso Tx/Santa Teresa [NM](#)

333 PM MDT Tue Sep 5 2017

.SYNOPSIS...

High pressure over the Great [Basin](#) will slowly drift east to over New Mexico Thursday. This will keep much of the Borderland free from thunderstorms, though a [slight risk](#) will continue over the mountains. By Monday and Tuesday the [ridge](#) drifts back over Arizona, bringing northerly [flow](#) back to our area. This will initially bring some thunderstorms to the mountains and the possibly to the lowlands Wednesday and Thursday.

&&

.DISCUSSION... Not much change to the big picture weather pattern. We are still stuck in the pattern of the upper high over the Great [Basin](#) inhibiting most or all [convection](#) over the [CWA](#).

Weak backdoor cool [front](#) did move west through much of the area this morning. It briefly produced low clouds over the east slopes of the Sacs and now looks to have added enough low level [moisture](#) for fairly significant [cu](#) fields. [Inversion](#) at mid levels still looks to be [capping cu](#) from any growth. EPZ morning [sounding](#) showed strong [cap](#) around 600 [mb](#).

Remains of Lidia will be incorporated into Pacific [trough](#) and move slowly toward the California coast. This will begin a slow movement of our upper [ridge](#) over New Mexico Thursday and then over western Texas Friday.

This will [likely](#) strengthen the mid level [cap](#) though also allow some tropical [moisture](#) out near the Arizona border. Hence, kept [POPs](#) out of the east through the weekend, but put low [POPS](#) out west with the added [moisture](#)

. The hazy, smokey conditions of the past several days should diminish. By Sunday and Monday the affects of [Hurricane](#) Irma will be felt tangentially. As it nears Florida, it will block the Pacific [trough](#)/Texas [ridge](#) from moving any further east. In fact the couple are forced back west. By Monday the [flow](#) turns northerly with the [ridge](#) to our west. This could bring a few thunderstorms back to the mountains.

.PRELIMINARY POINT TEMPS/POPS...

El Paso	67	89	66	91	/	0	0	0	0
Sierra Blanca	61	85	60	88	/	0	0	0	0
Las Cruces	62	87	61	89	/	0	0	0	0
Alamogordo	60	86	61	89	/	0	0	0	0
Cloudcroft	44	66	47	69	/	10	20	20	20
Truth or Consequences	62	87	64	88	/	0	0	10	10
Silver City	57	84	58	86	/	10	20	20	20
Deming	62	88	61	90	/	0	0	0	0
Lordsburg	64	89	61	91	/	0	0	0	0
West El Paso <u>Metro</u>	67	88	65	90	/	0	0	0	0
Dell City	61	87	59	91	/	0	0	0	10
Fort Hancock	64	90	62	91	/	0	0	0	0
Loma Linda	60	84	61	88	/	0	0	0	0
Fabens	65	89	63	91	/	0	0	0	0
Santa Teresa	64	88	63	90	/	0	0	0	0
White Sands HQ	61	86	62	89	/	0	0	0	0
Jornada Range	57	87	58	90	/	0	0	0	0
Hatch	62	88	61	90	/	0	0	0	0
Columbus	64	89	61	90	/	0	0	0	0
Orogrande	63	86	64	89	/	0	0	0	0
Mayhill	46	74	52	79	/	10	20	20	20
Mescalero	49	76	52	81	/	10	20	20	20
Timberon	48	72	51	78	/	10	20	20	20
Winston	50	82	49	83	/	10	20	20	20
Hillsboro	58	87	58	90	/	10	20	20	20
Spaceport	56	87	60	89	/	0	0	0	0
Lake Roberts	49	82	47	85	/	10	20	20	20
Hurley	56	86	59	88	/	10	20	20	20
Cliff	49	89	50	89	/	10	10	10	10

[GFS](#) shows [moisture](#) and [instability](#) returning to all zones on Tuesday and Wednesday, so the lowlands could see a [thunderstorm](#) or two.

AVIATION...Valid 06/00Z-07/00Z... P6SM FEW-SCT100-120 through 18z then [SCT](#)-BKN090-110. [Isolated](#) -[TSRA](#) BKN060-080 possible mainly over area mountains until 03Z and again after 18Z. Winds mainly E to SE 5-15KTS with some higher gusts possible on western mountain slopes between 03Z and 12Z. && .

FIRE WEATHER... Weak back door cold [front](#) moving through region at this time but it will not have much affect on temperatures, especially western zones. There will be an increase in low level [moisture](#) behind [front](#) which will increase precipitation chances, mainly over area mountains for the next few days.

Expect relative humidities to rise into the 20s for the lowlands with 30s and 40s in area mountains. There will be some gusty winds through tonight, especially far west and western mountain slopes, but decrease after sunrise tomorrow. Vent rates will be falling into the [fair](#) to good categories for the next couple of days.

EPZ WATCHES/WARNINGS/ADVISORIES

[NM](#)...None. TX...None. \$\$

Hefner/Grzywacz



Region Product

[Hide Menu](#) | [Search](#) | Map Product:

Data Selection

[Region/Zone](#)

Network:

Units:

Display

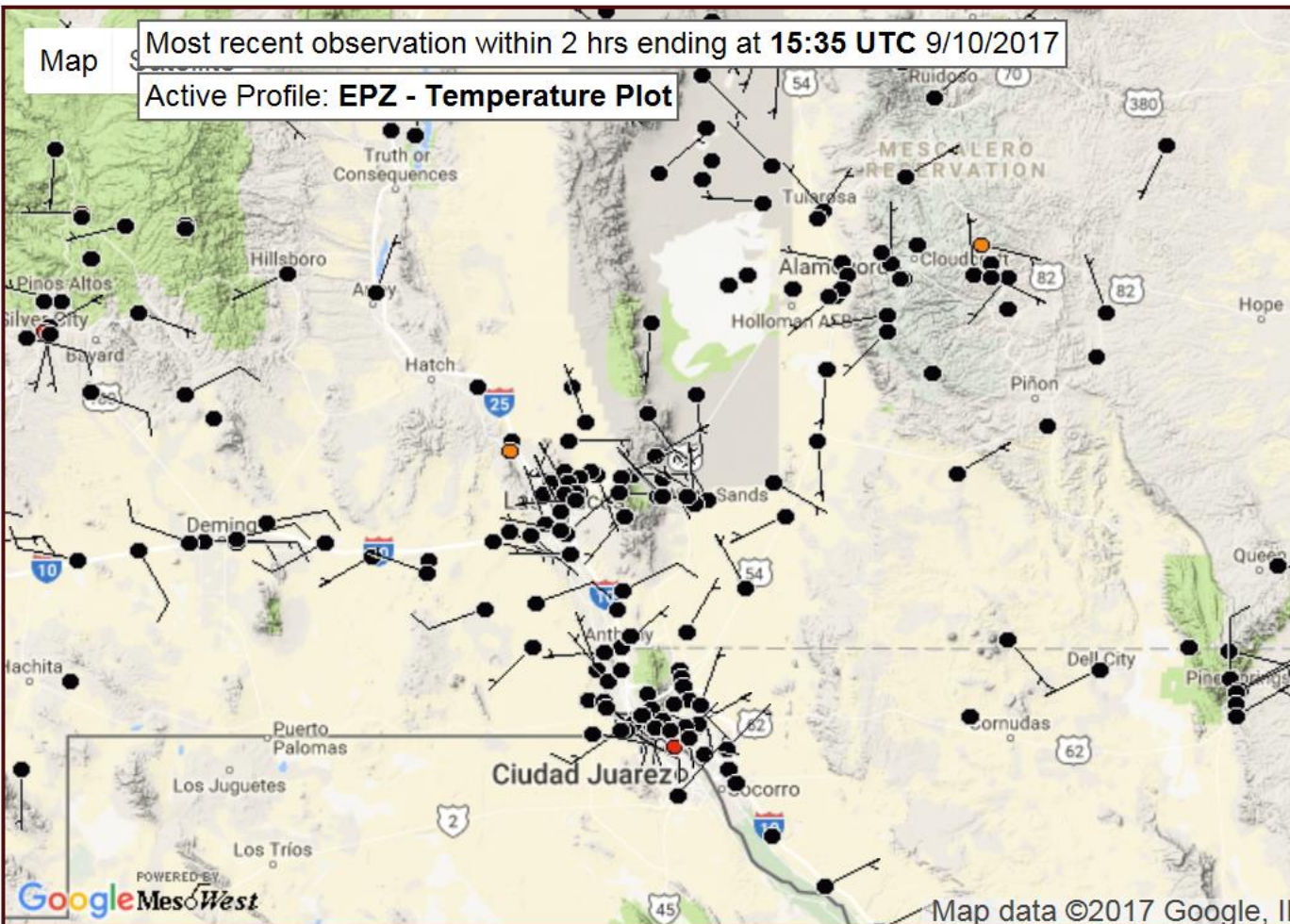
Overlay 1:

Overlay 2:

☒ Highlight Data

Other Features

Powered by Google Translate



▼

Product

Surface Weather Maps

▼

Go

▼

Change

Map

Most recent observation within 2 hrs ending at **15:43 UTC 9/10/2017**

 Active F

Active Profile: **EPZ - Temperature Plot**

