

Present Weather Discussion Week FOUR



Bob Endlich

bendlich@msn.com

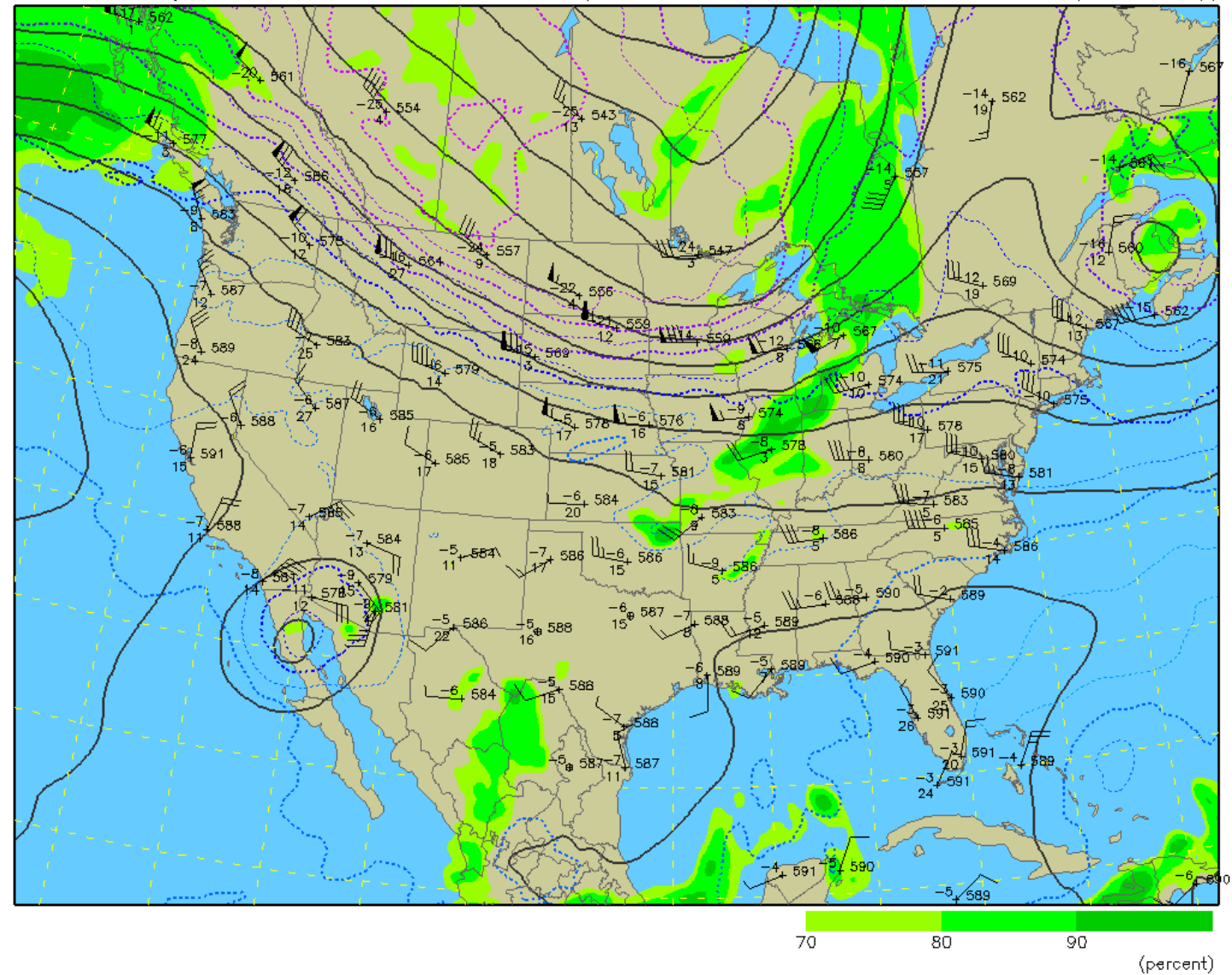
Weather, Climate, and Climate Change—What the Data Tell Us

25 Sep 2019

500 mb Heights (dm) / Temperature (°C) / Humidity (%)

0-hour analysis valid 1200 UTC Wed 25 Sep 2019

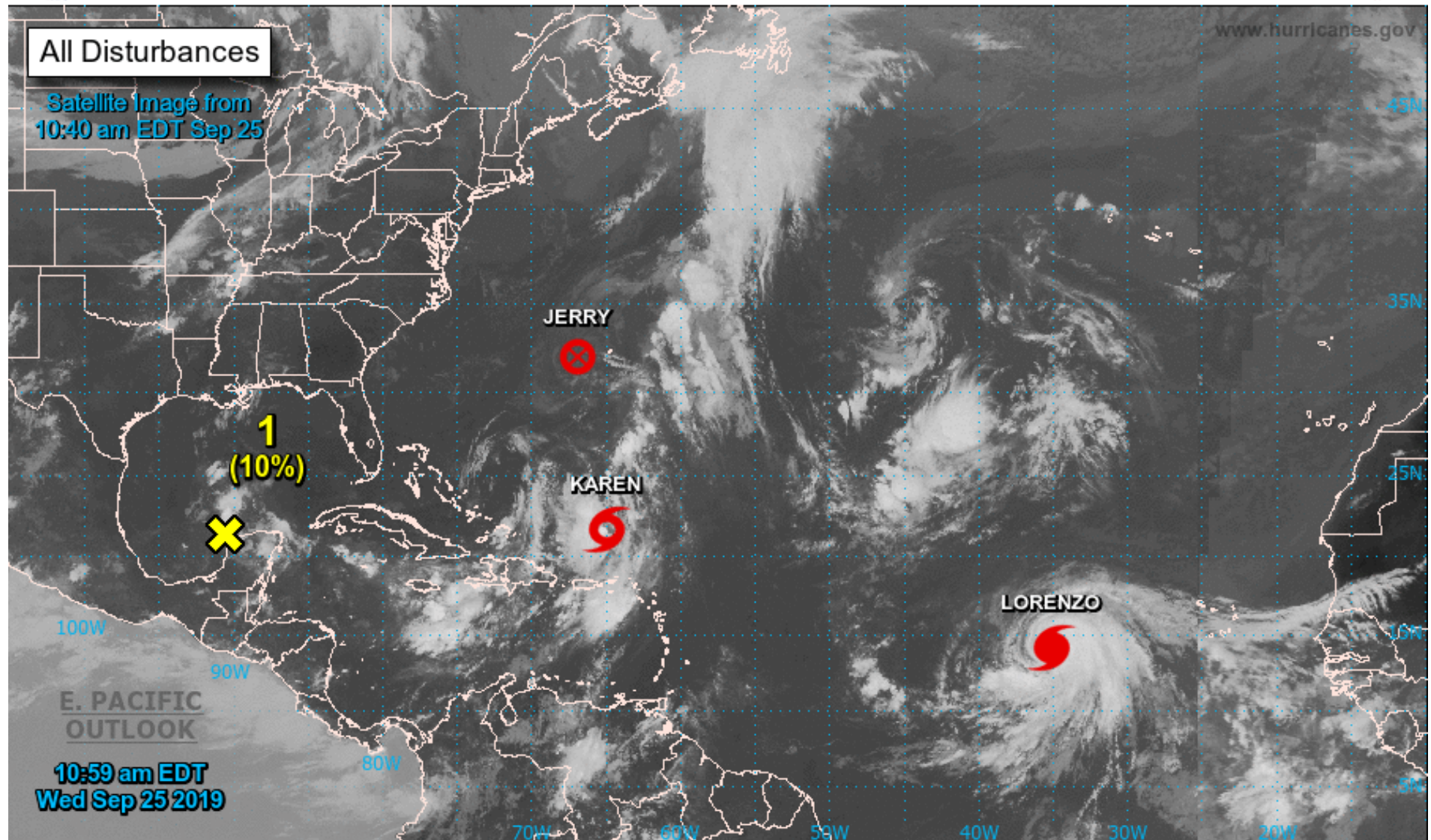
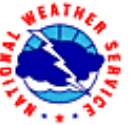
RAP (12z 25 Sep)





Two-Day Graphical Tropical Weather Outlook

National Hurricane Center Miami, Florida



Current Disturbances and Two-Day Cyclone Formation Chance: < 40% 40-60% > 60%

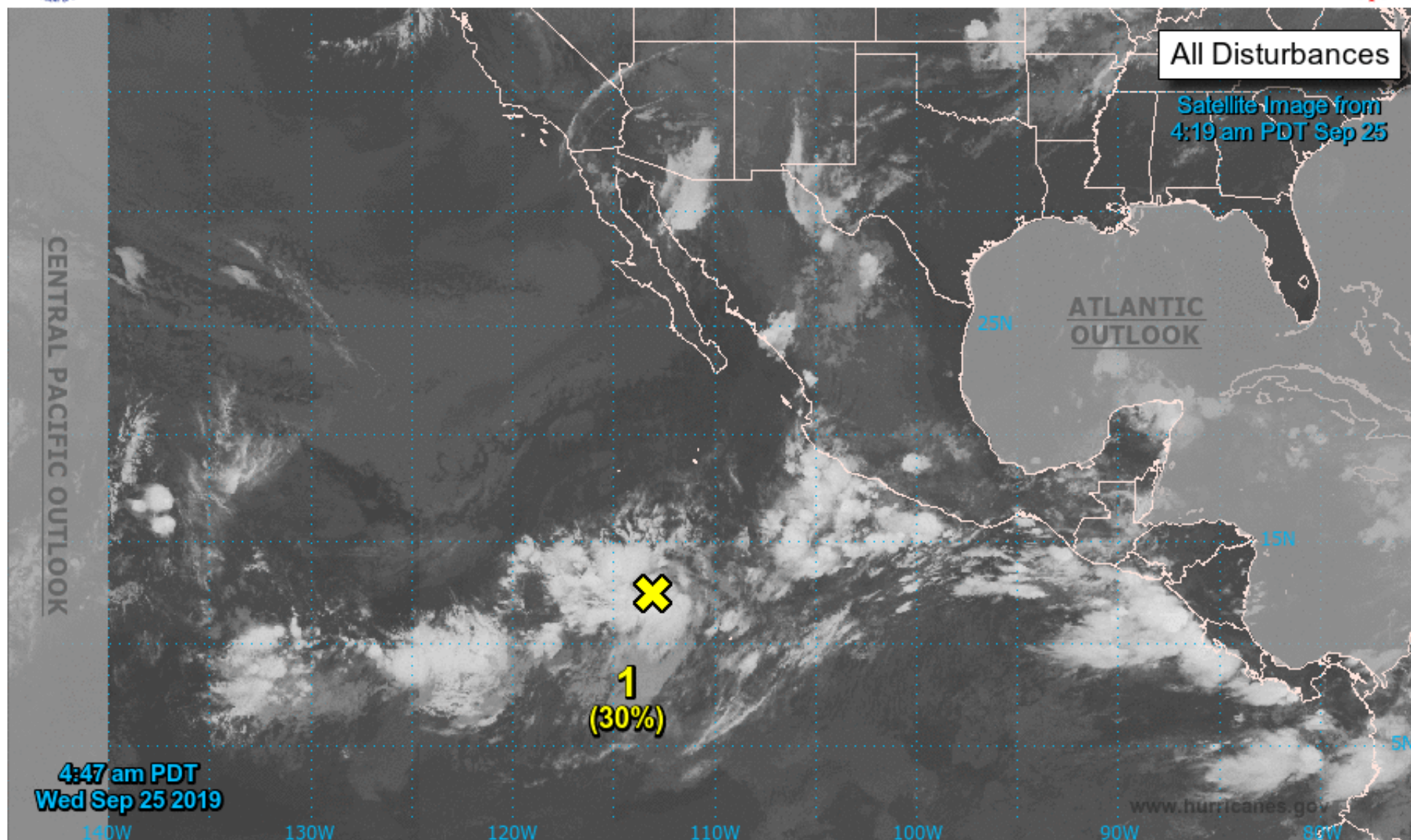
Tropical or Sub-Tropical Cyclone: Depression Storm Hurricane

Post-Tropical Cyclone or Remnants



Two-Day Graphical Tropical Weather Outlook

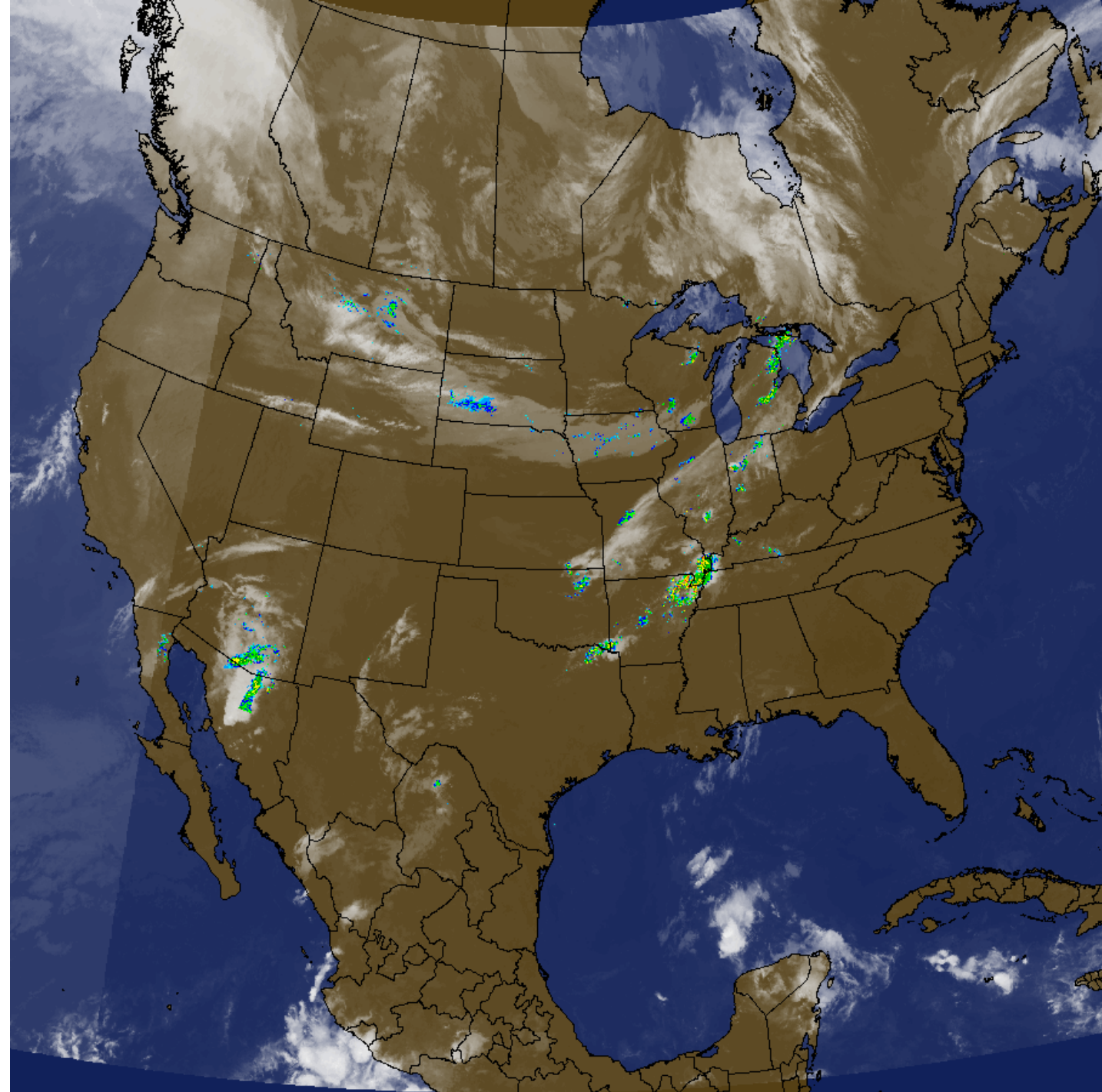
National Hurricane Center Miami, Florida



Current Disturbances and Two-Day Cyclone Formation Chance: < 40% 40-60% > 60%

Tropical or Sub-Tropical Cyclone: Depression Storm Hurricane

Post-Tropical Cyclone or Remnants





National Oceanic and Atmospheric Administration's

National Weather Service

Site Map

News

Local forecast by
"City, St"

City, St Go

Sign-up for Email
Alerts

XML RSS Feeds

Warnings

Current

By State/County...
UV Alerts

Observations

Radar

Satellite

Snow Cover

Surface Weather...

Observed Precip

Forecasts

Local

Graphical

Aviation

Marine

Rivers & Lakes

Hurricanes

Severe Weather

Space Weather

Fire Weather

Text Bulletins

By State

By Message Type

National

Forecast Models

Numerical Models

Statistical Models...

MOS Prod

GFS-LAMP Prod

Climate

Past Weather

Predictions

Weather Safety

Weather Radio

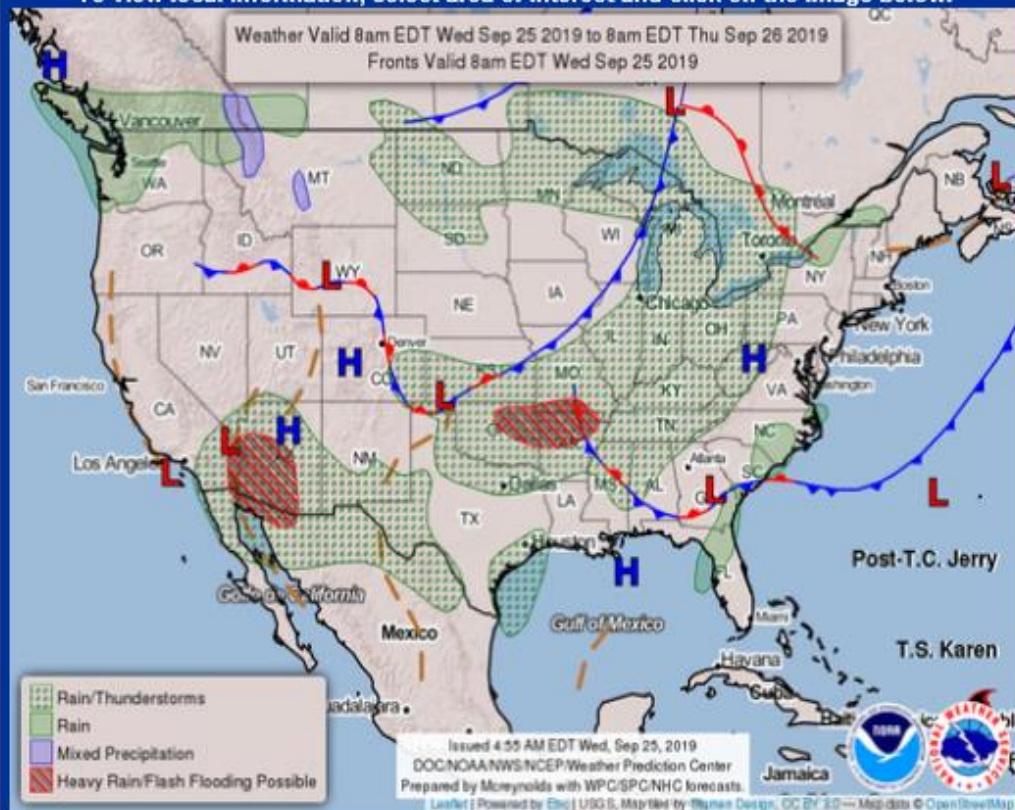
Hazard Assmt...

Home > National Maps

This current Forecast for North America is produced by the [Hydrometeorological Prediction Center](#) of the [National Centers for Environmental Prediction](#). It is normally updated at about 7am US Eastern time.

[Warnings & Forecasts](#) [Graphical Forecasts](#) [National Maps](#) [Radar](#) [Water](#) [Air Quality](#) [Satellite](#) [Climate](#)

To view local information, select area of interest and click on the image below.



[High Resolution Version](#) | [Legend](#) | [About These Maps](#) | [Animated Forecast Maps](#)

[Alaska Maps](#) | [Pacific Islands Map](#) | [Ocean Maps](#) | [Previous Days Weather Maps](#)

https://www.nws.noaa.gov/outlook_tab.php

Weather Safety
Weather Radio
Hazard Assmt...
StormReady /
TsunamiReady
Skywarn™
Education/Outreach
Information Center
Tsunamis
Publications...

Contact Us
FAQ
Comments...

**Weather-Ready
Nation**

USA.gov
Government Made Easy

**Find us on
Facebook**
NWS on Facebook

**NWS
Director**

[High Resolution Version](#) | [Legend](#) | [About These Maps](#) | [Animated Forecast Maps](#)

[Alaska Maps](#) | [Pacific Islands Map](#) | [Ocean Maps](#) | [Previous Days Weather Maps](#)

12 Hour
Fronts/Precipitation



Day 3 Fronts



Surface Analysis



Hi Res Version

24 Hour
Fronts/Precipitation



Day 4 Fronts



Precip Amt Day 1



36 Hour
Fronts/Precipitation



Day 5 Fronts



Precip Amt Day 2



48 Hour
Fronts/Precipitation



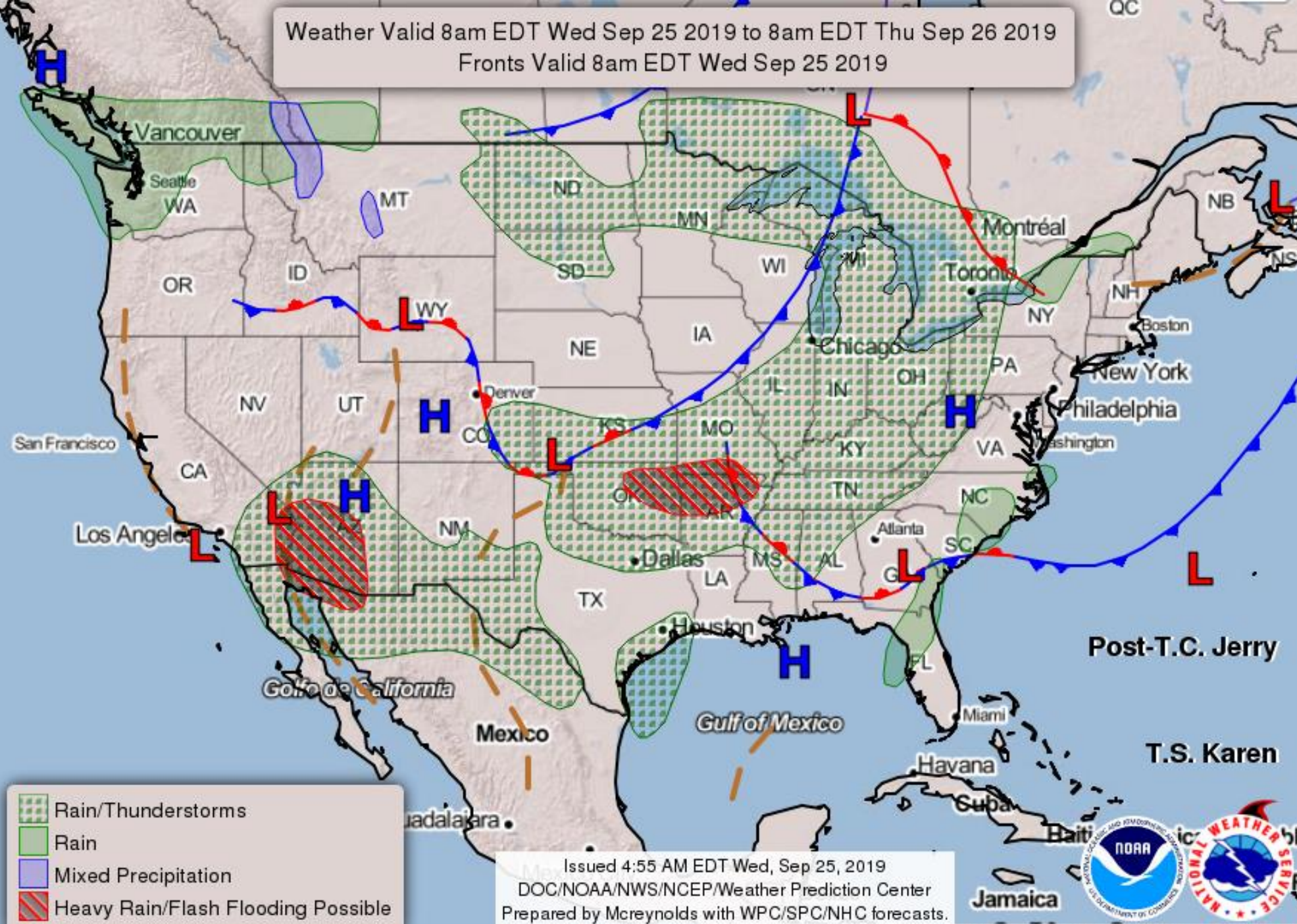
Day 6 Fronts



Precip Amt Day 3



Weather Valid 8am EDT Wed Sep 25 2019 to 8am EDT Thu Sep 26 2019
Fronts Valid 8am EDT Wed Sep 25 2019

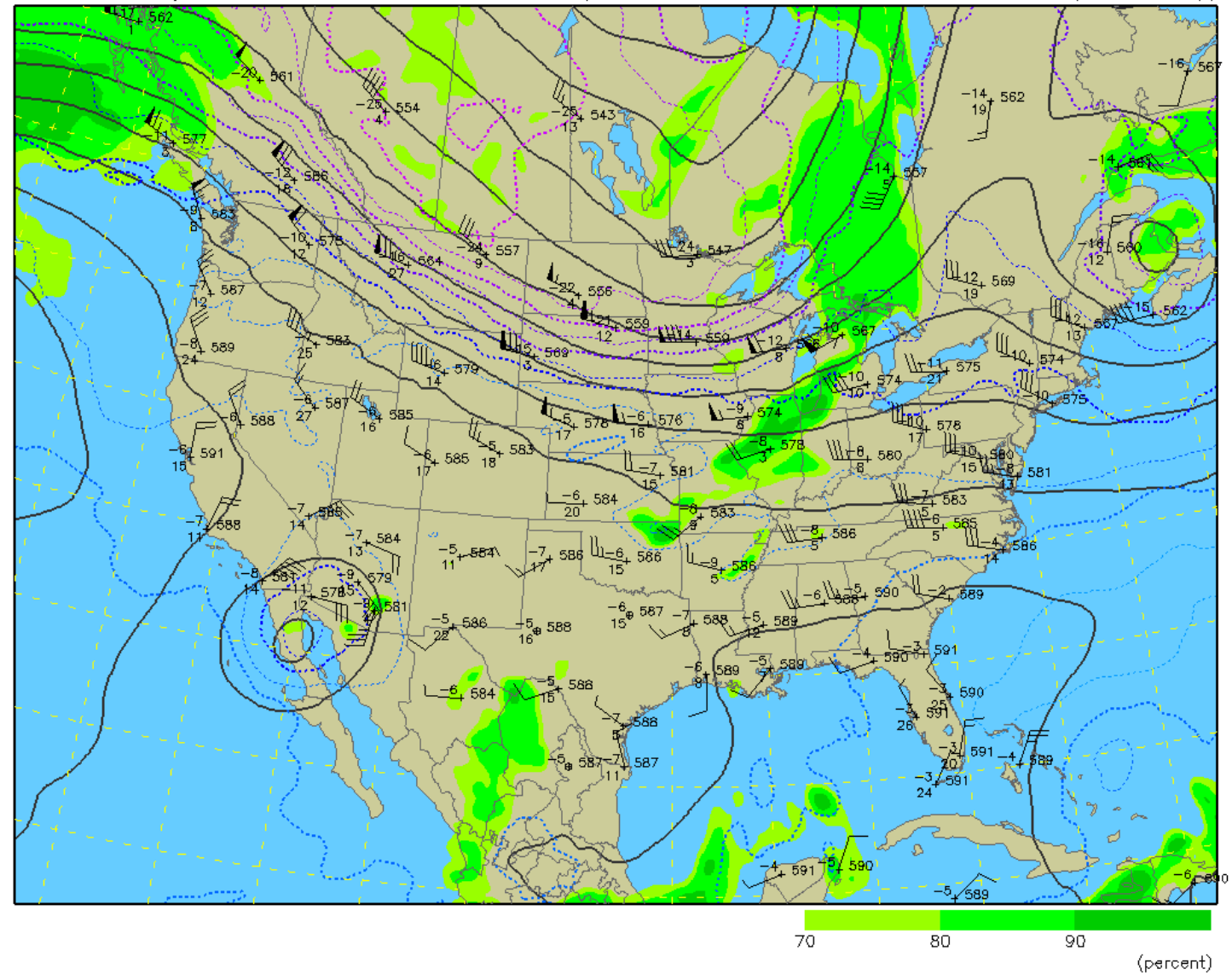


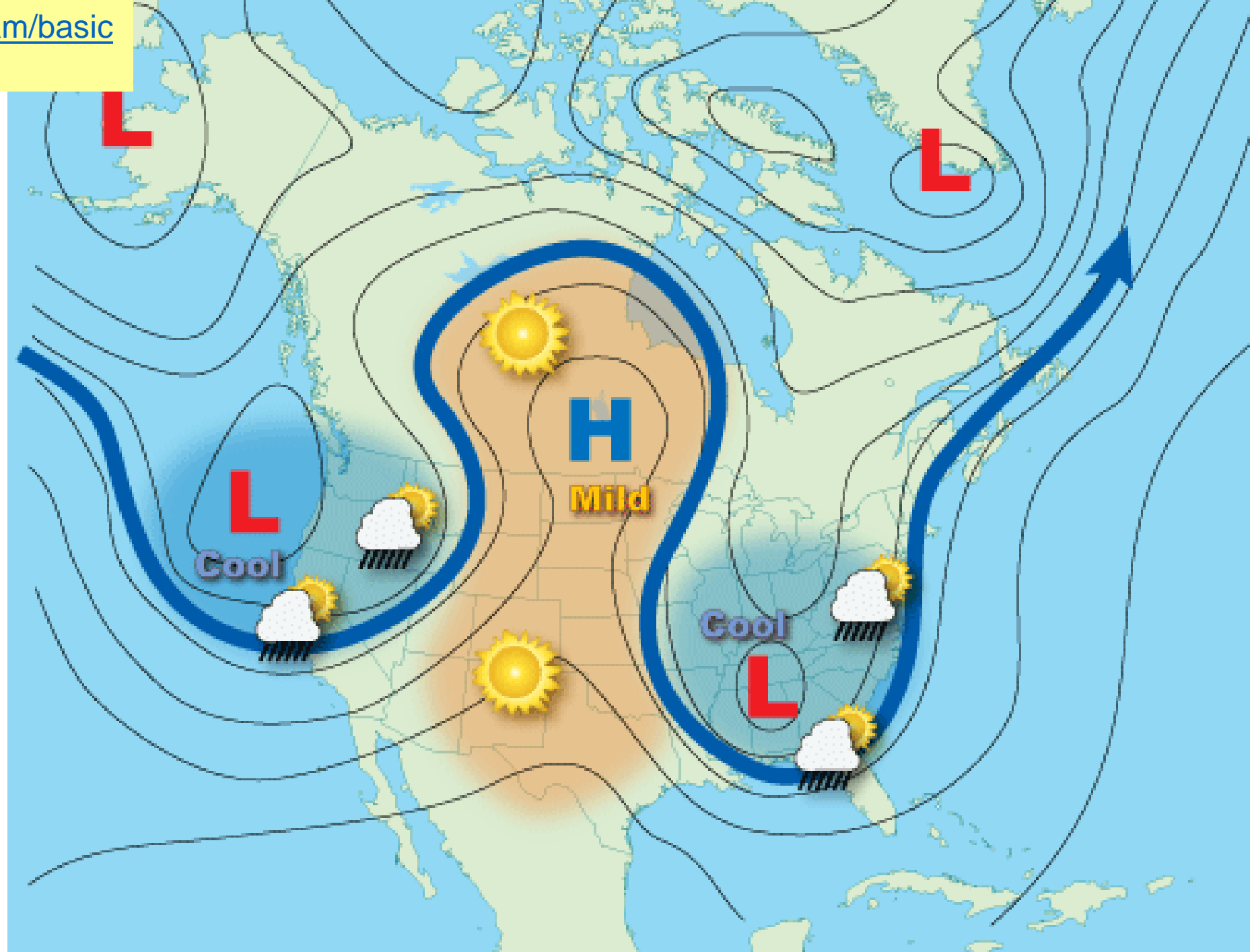
- Rain/Thunderstorms
- Rain
- Mixed Precipitation
- Heavy Rain/Flash Flooding Possible

Issued 4:55 AM EDT Wed, Sep 25, 2019
DOC/NOAA/NWS/NCEP/Weather Prediction Center
Prepared by McCreynolds with WPC/SPC/NHC forecasts.



RAP (12z 25 Sep)

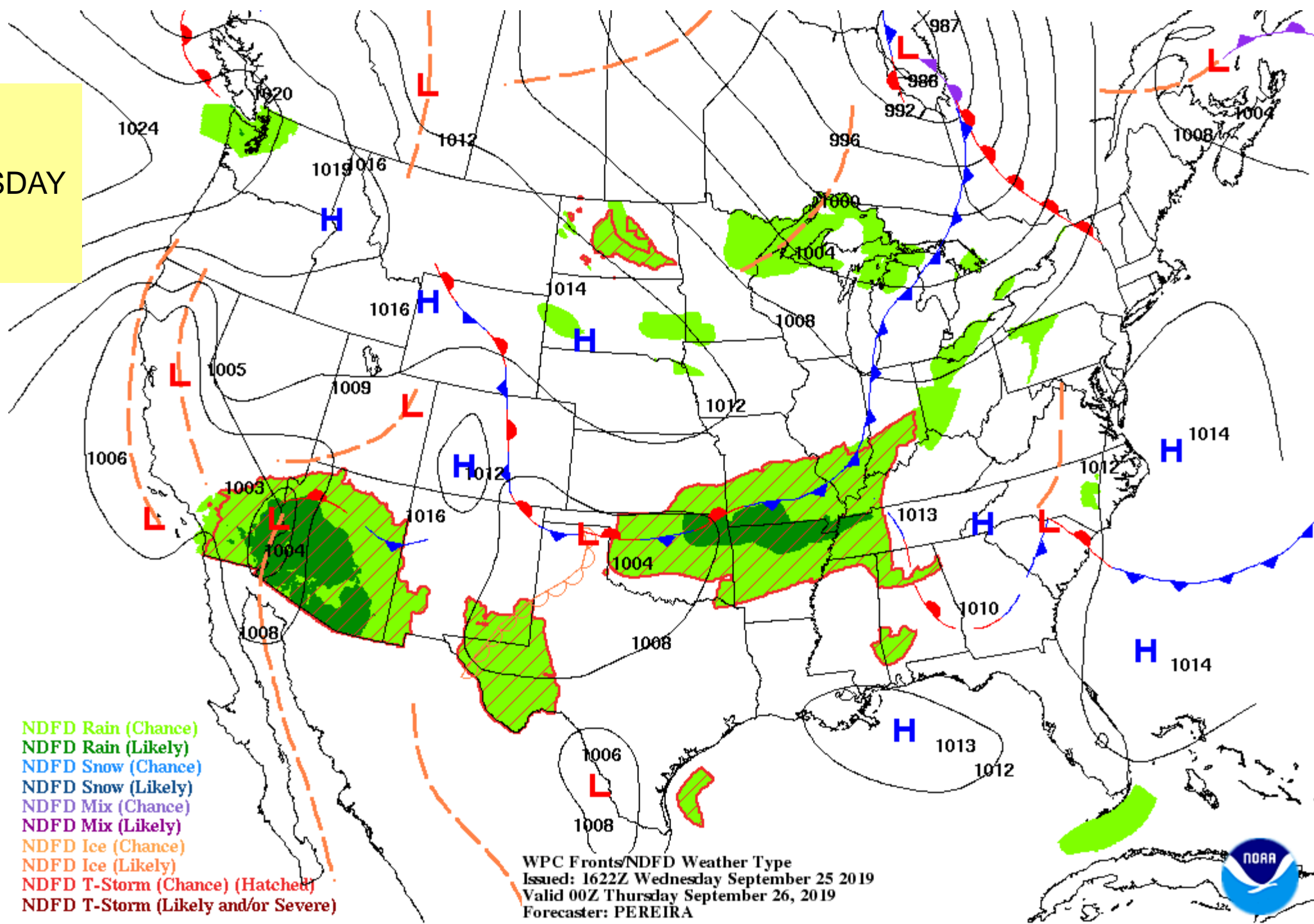




NWS FCST

VT 0000Z THURSDAY

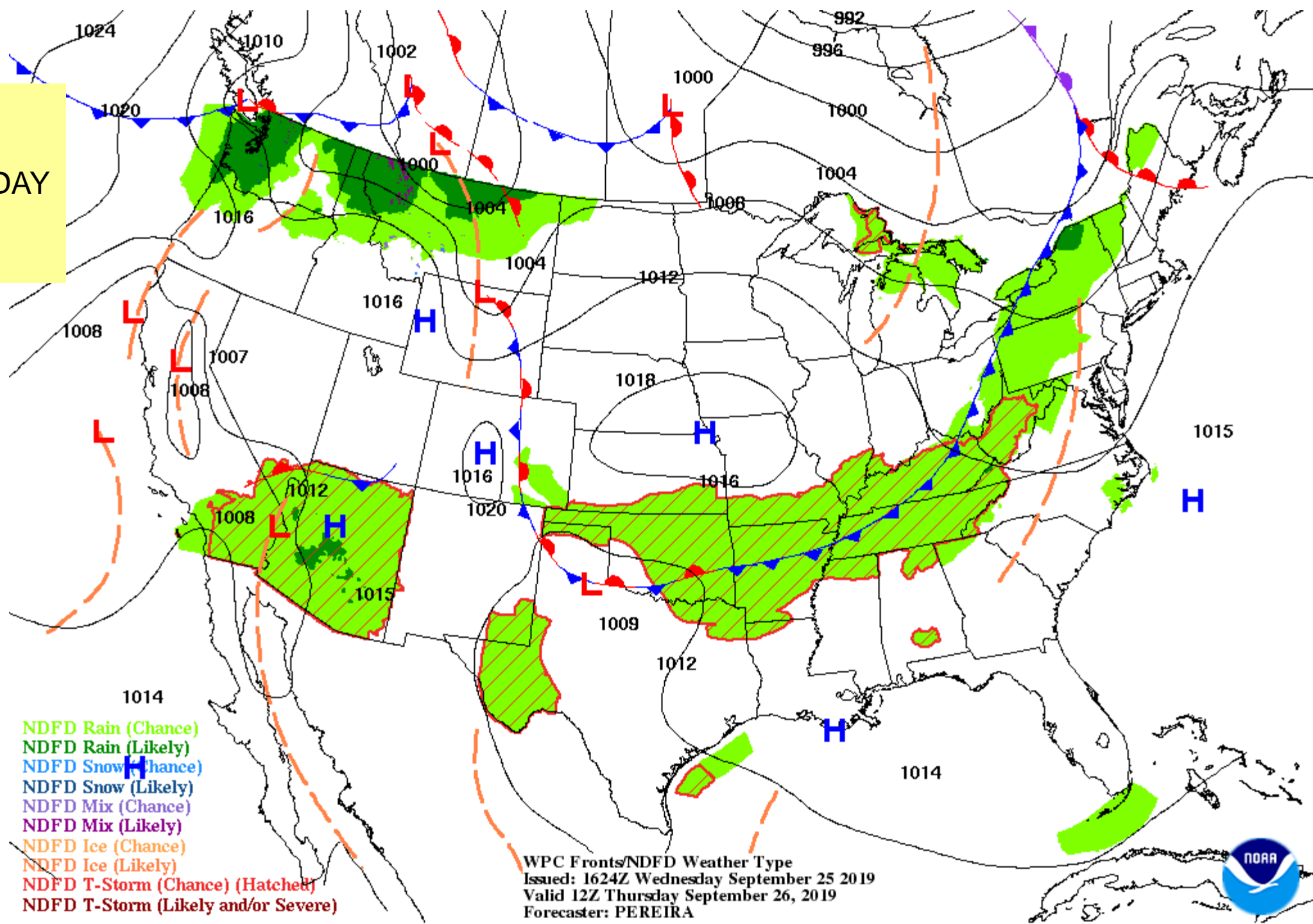
WED PM



NWS FCST

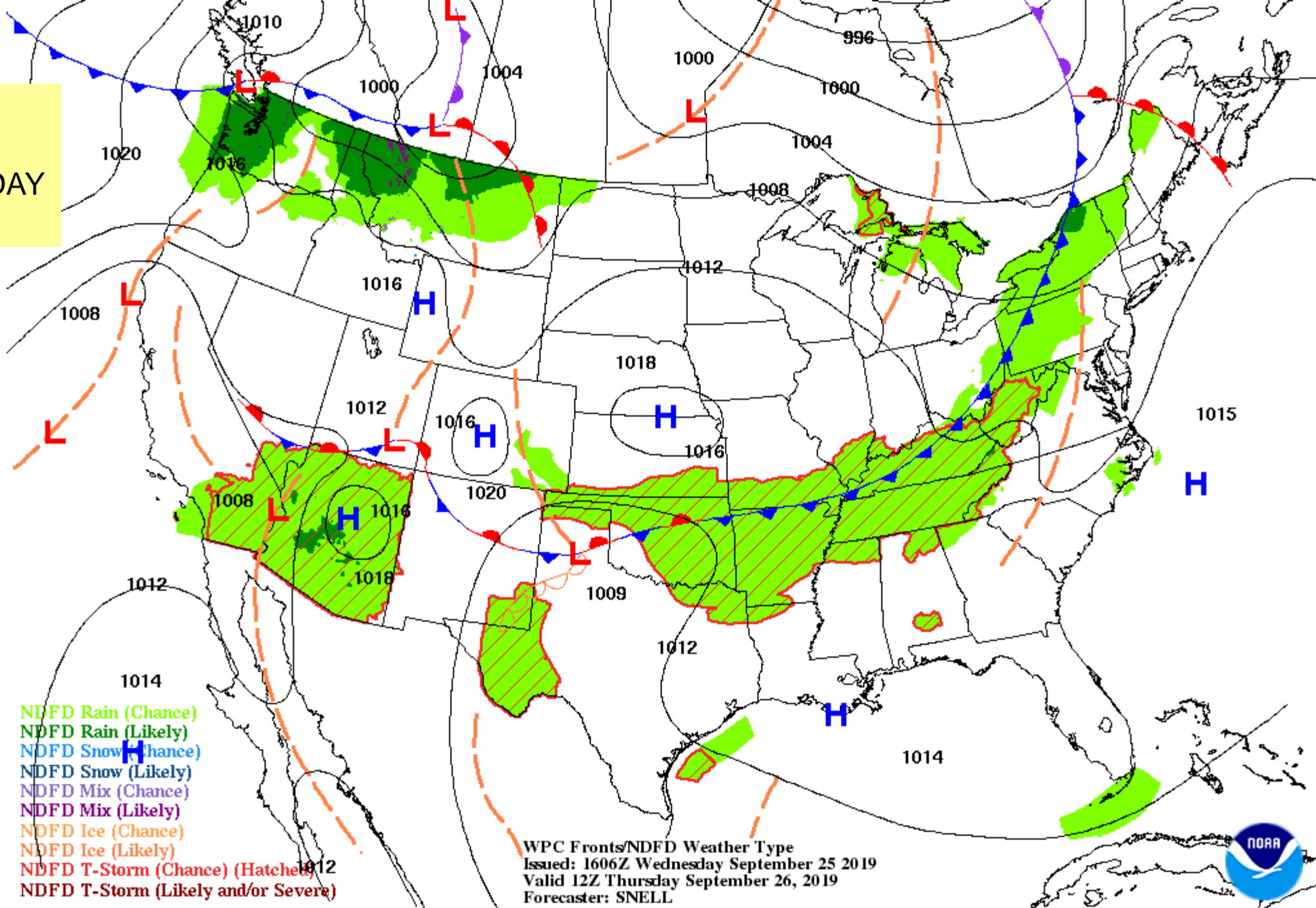
VT 1200Z THURSDAY

THURS AM



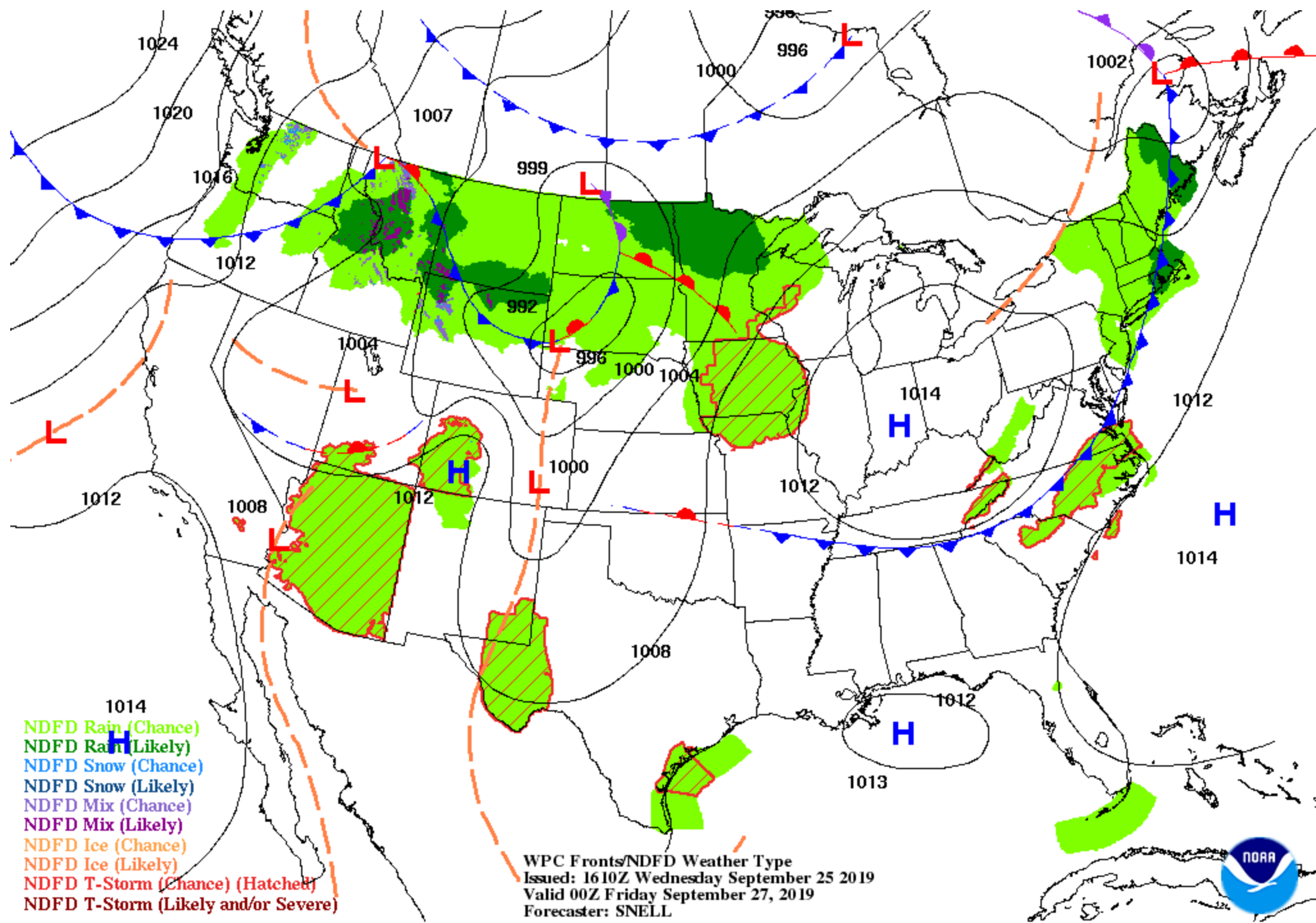
NWS FCST

VT 1200Z THURSDAY
THURS AM



NWS FCST

VT 0000Z FRIDAY
THURS PM



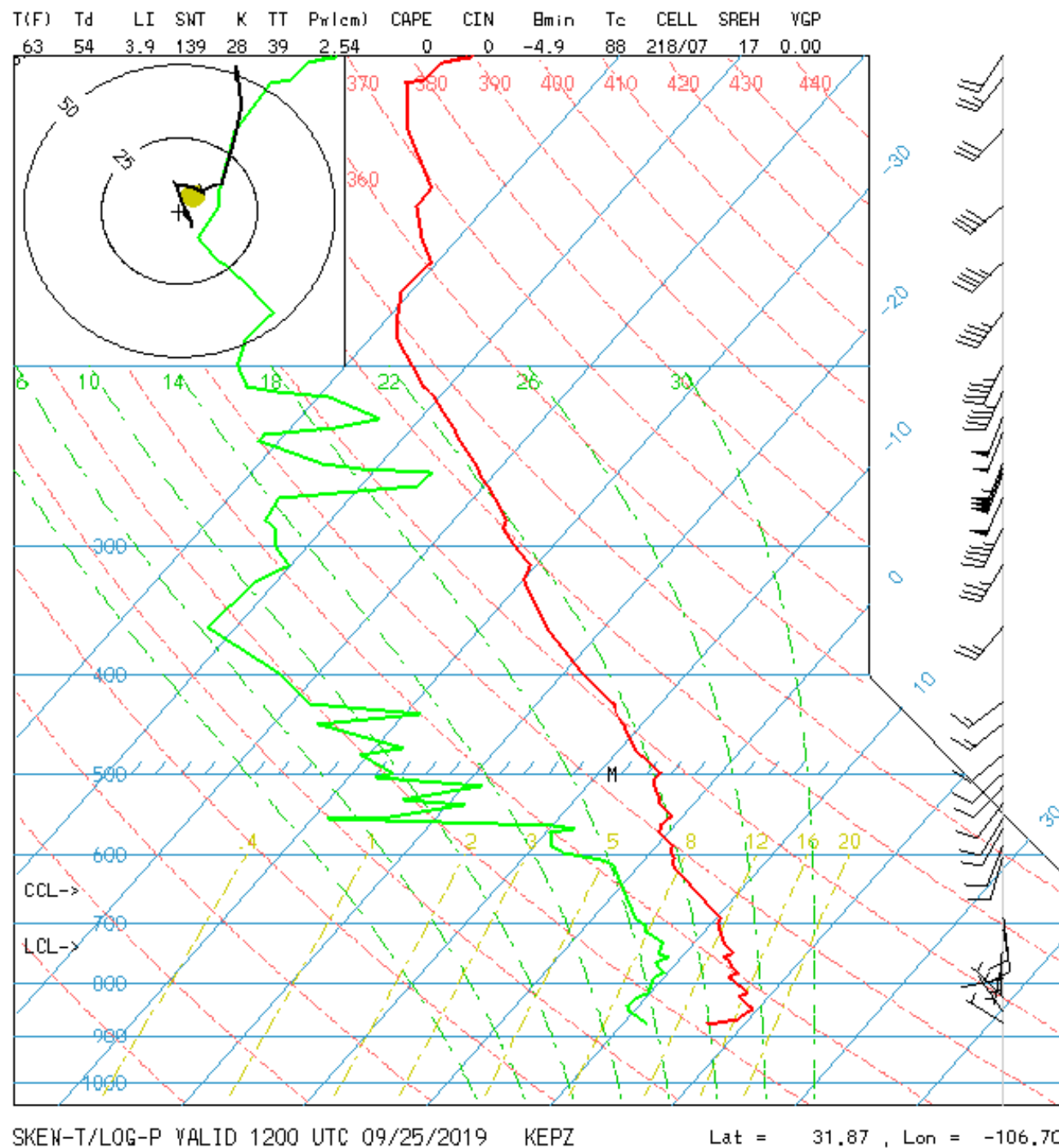
<http://weather.rap.ucar.edu/upper/epz.gif>

EL PASO AM SOUNDING

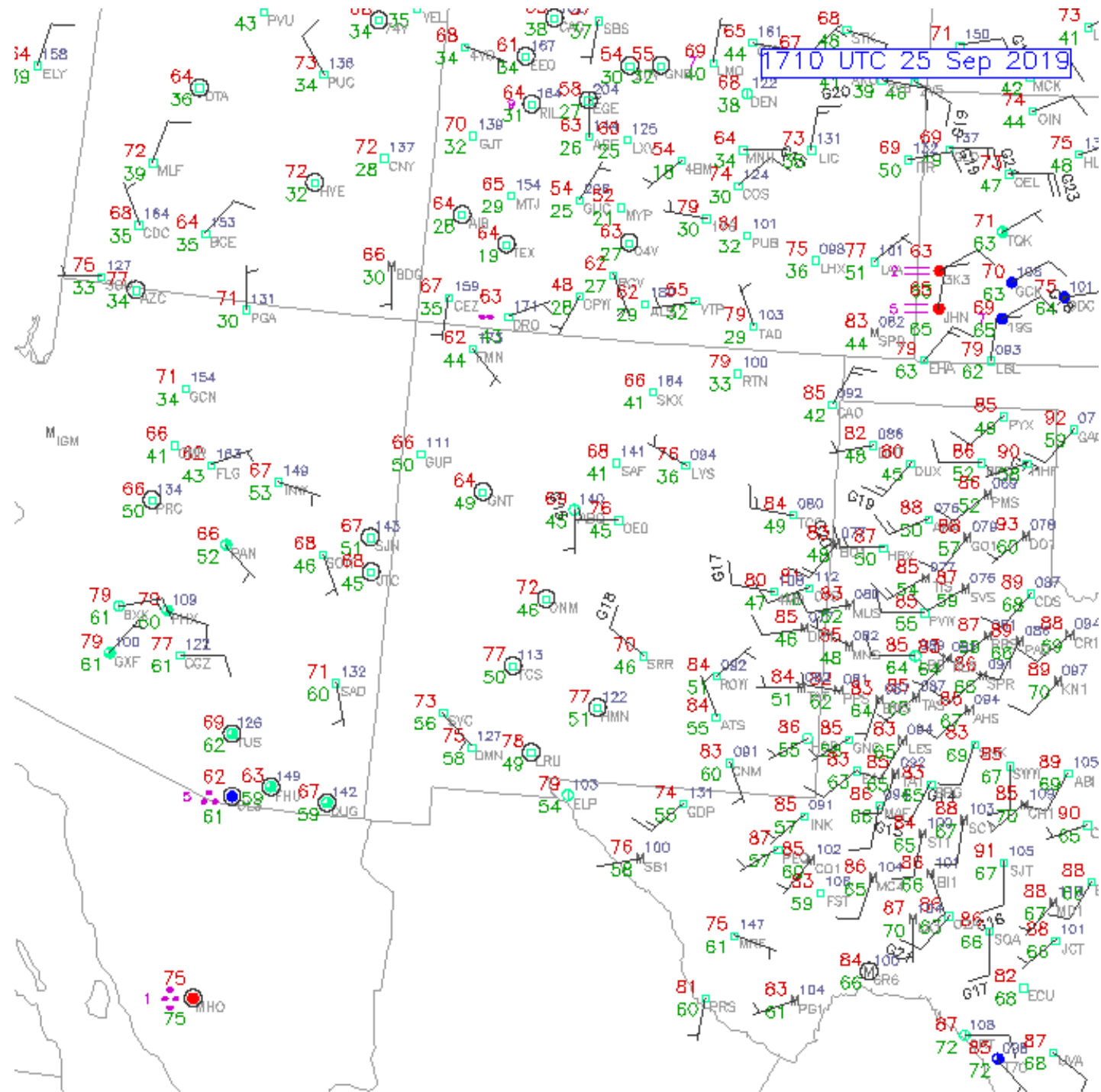
WED AM

All Westerlies

Exactly 1" Precipitable Water



<http://weather.rap.ucar.edu/surface/displaySfc.php?region=abq&endDate=20100315&endTime=-1&duration=0>



.DISCUSSION... Upper low was located over northern Baja early this morning with water vapor images showing drier air rotating around this system into New Mexico and far west Texas. [Air mass](#) will still be unstable over western zones from cooler air aloft due to closer proximity of the low with afternoon [CAPE](#)'s around 500 to 1000 [J/kg](#). This factor plus possibility of a weak [impulse](#) moving into the area from the south should initiate [isolated](#) to [scattered convection](#) western zones this afternoon with strongest activity in the bootheel region. Mid level winds around 30 [kt](#) may provide sufficient [shear](#) for a few storms to become marginally severe. Deeper [moisture](#) plus surface heating may also support [isolated](#) storms eastern zones. Otherwise expect drier weather across the [CWA](#) as both synoptic models and CAMs indicate little or no [rainfall](#) most locations today and tonight.