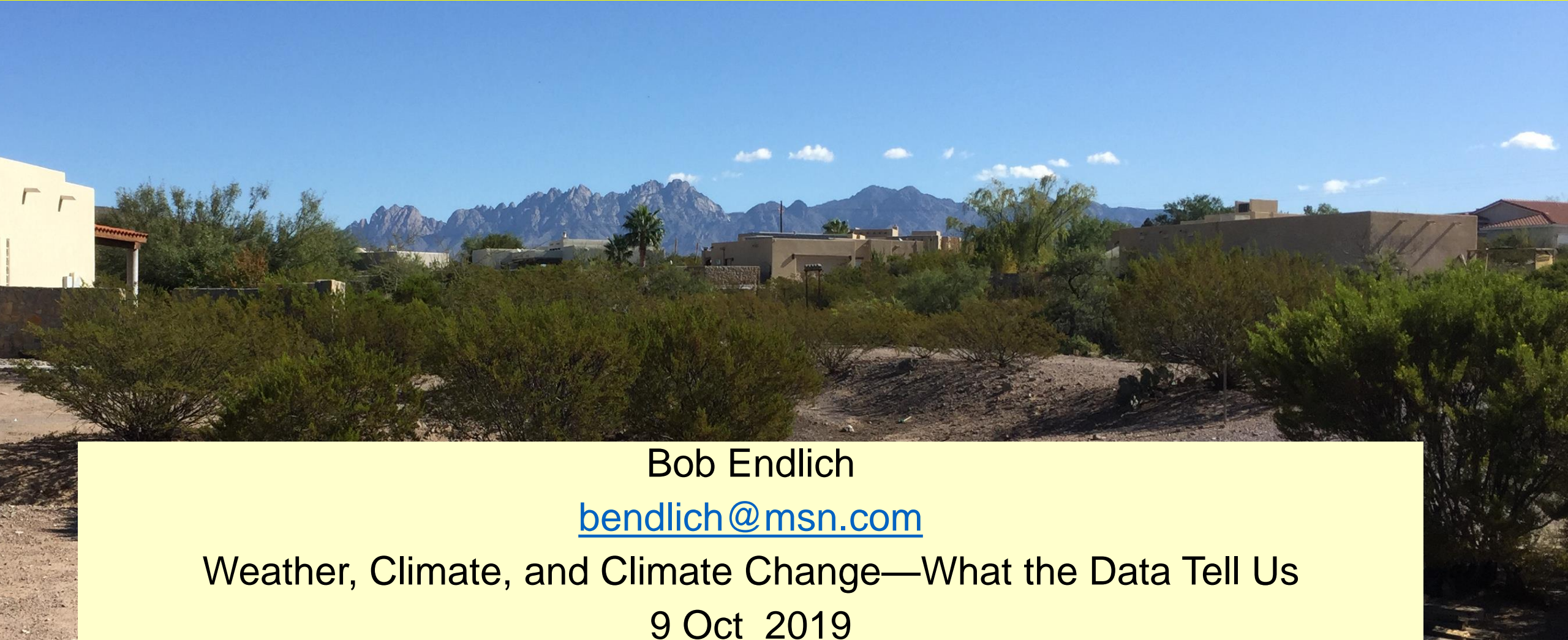


# Present Weather Discussion Week SIX



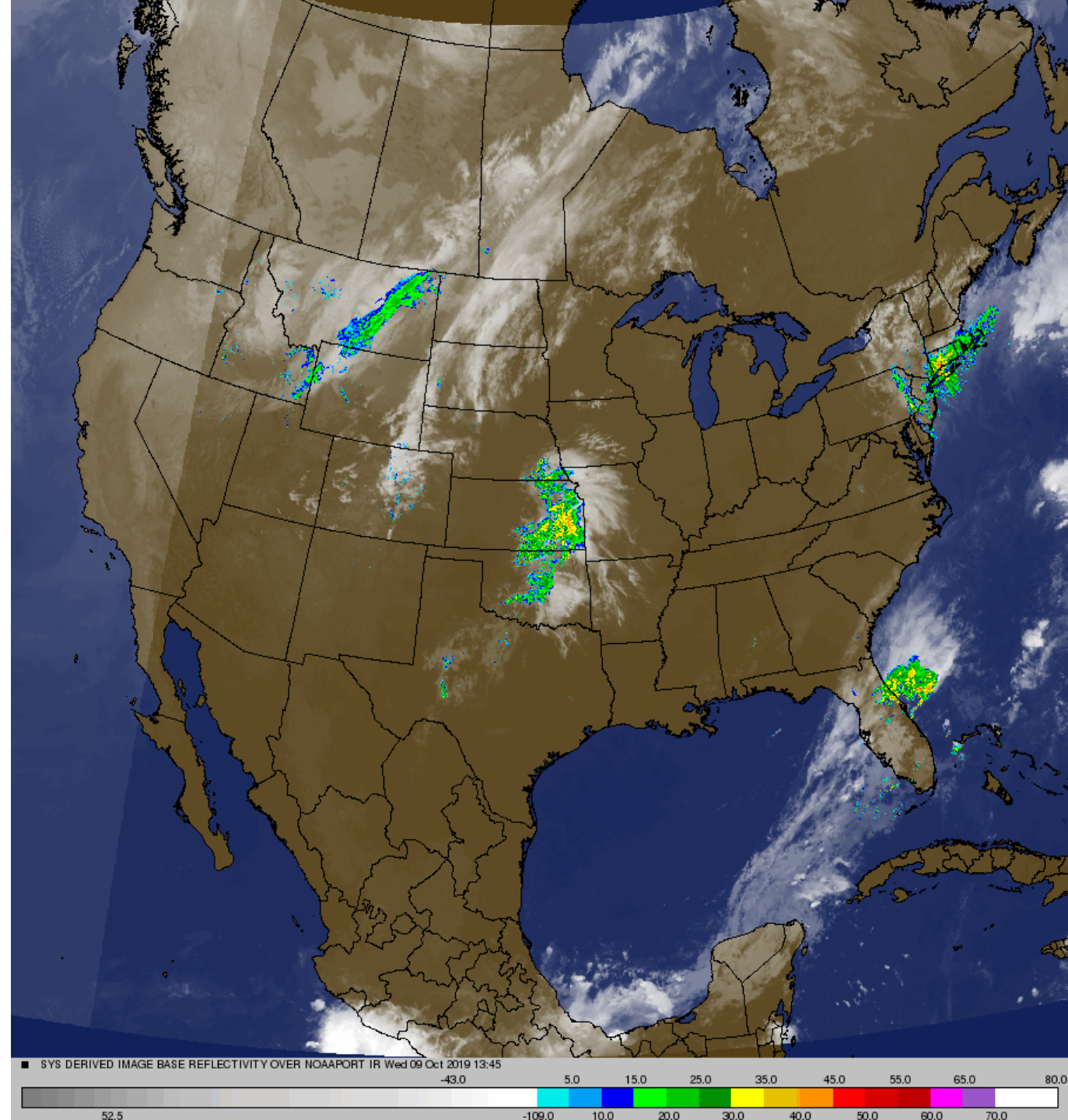
Bob Endlich

[bendlich@msn.com](mailto:bendlich@msn.com)

Weather, Climate, and Climate Change—What the Data Tell Us

9 Oct 2019

[http://wxweb.meteostar.com/models/noaaport\\_loop.php?PATH=/var/www/leads\\_images/satellite/SYS/COMP/](http://wxweb.meteostar.com/models/noaaport_loop.php?PATH=/var/www/leads_images/satellite/SYS/COMP/)

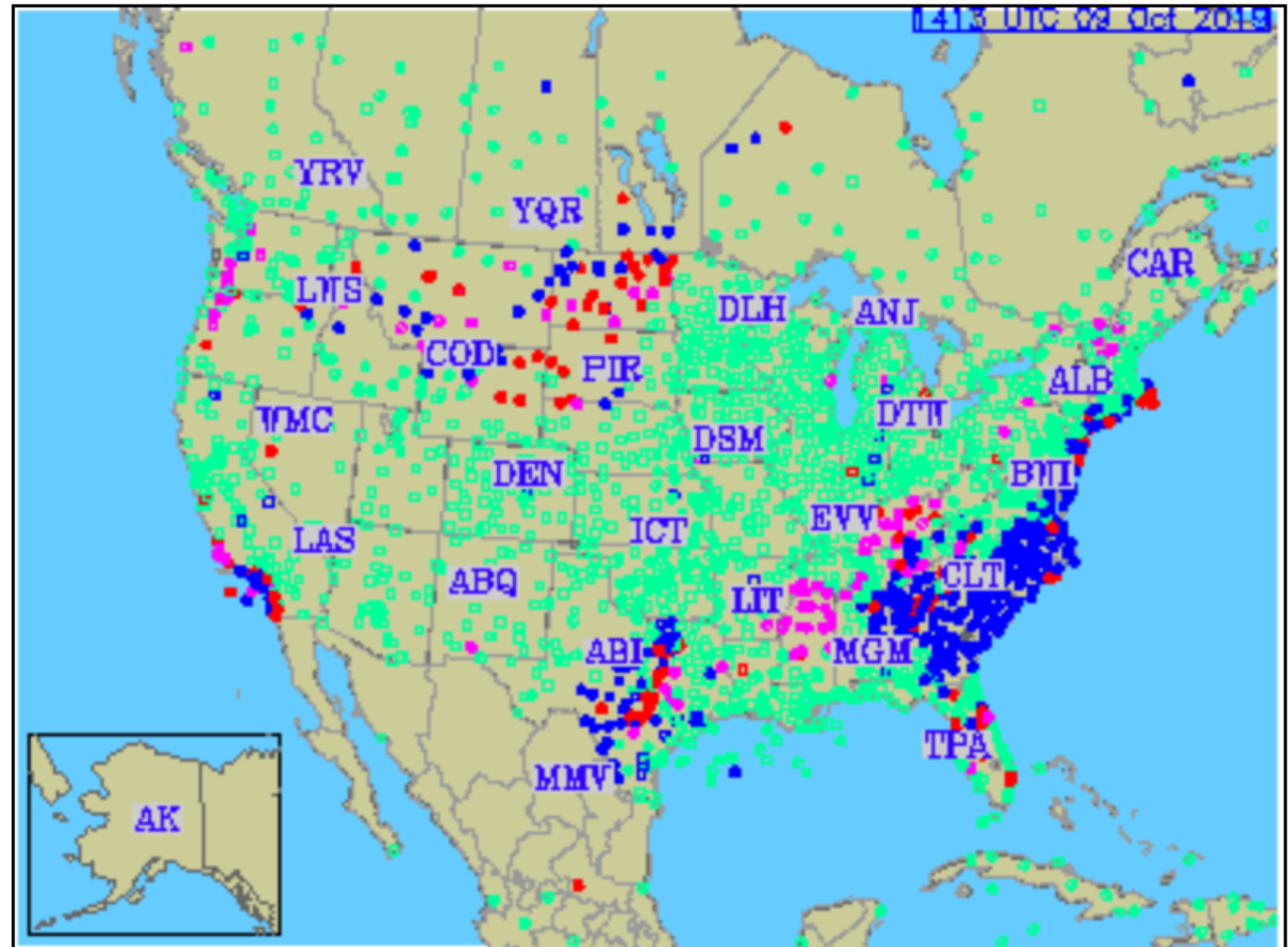


<http://weather.rap.ucar.edu/surface/>

End date: Today ▼

End time: Most recent ▼

Loop duration: Single image ▼





# Aviation Digital Data Service (ADDS)

Output produced by METARs form (1419 UTC 09 October 2019)  
found at <http://aviationweather.gov/metar/data/>

[https://aviationweather.gov/adds/metars/index?station\\_ids=KLRU&hoursStr=2&std\\_trans=translated&chk\\_metars=on](https://aviationweather.gov/adds/metars/index?station_ids=KLRU&hoursStr=2&std_trans=translated&chk_metars=on)

**METAR text:** KLRU 091415Z AUTO 00000KT 2SM BR CLR 16/16 A3000 RMK AO2 T01560156

**Conditions at:** KLRU (LAS CRUCES INTL , NM, US) observed 1415 UTC 09 October 2019

**Temperature:** 15.6°C (60°F)

**Dewpoint:** 15.6°C (60°F) [RH = 100%]

**Pressure (altimeter):** 30.00 inches Hg (1016.0 mb)

**Winds:** calm

**Visibility:** 2.00 miles (3.22 km)

**Ceiling:** at least 12,000 feet AGL

**Clouds:** sky clear below 12,000 feet AGL

**Weather:** BR (mist)

---

**METAR text:** KLRU 091355Z AUTO 00000KT 1/4SM FG BKN002 13/13 A2999 RMK AO2 T01330133

**Conditions at:** KLRU (LAS CRUCES INTL , NM, US) observed 1355 UTC 09 October 2019

**Temperature:** 13.3°C (56°F)

**Dewpoint:** 13.3°C (56°F) [RH = 100%]

**Pressure (altimeter):** 29.99 inches Hg (1015.7 mb)

**Winds:** calm

**Visibility:** 0.25 miles (0.40 km)

**Ceiling:** 200 feet AGL

**Clouds:** broken clouds at 200 feet AGL

**Weather:** FG (fog)

---

**METAR text:** KLRU 091335Z AUTO 00000KT M1/4SM EG OVC002 12/12 A2999 RMK AO2 T01170117

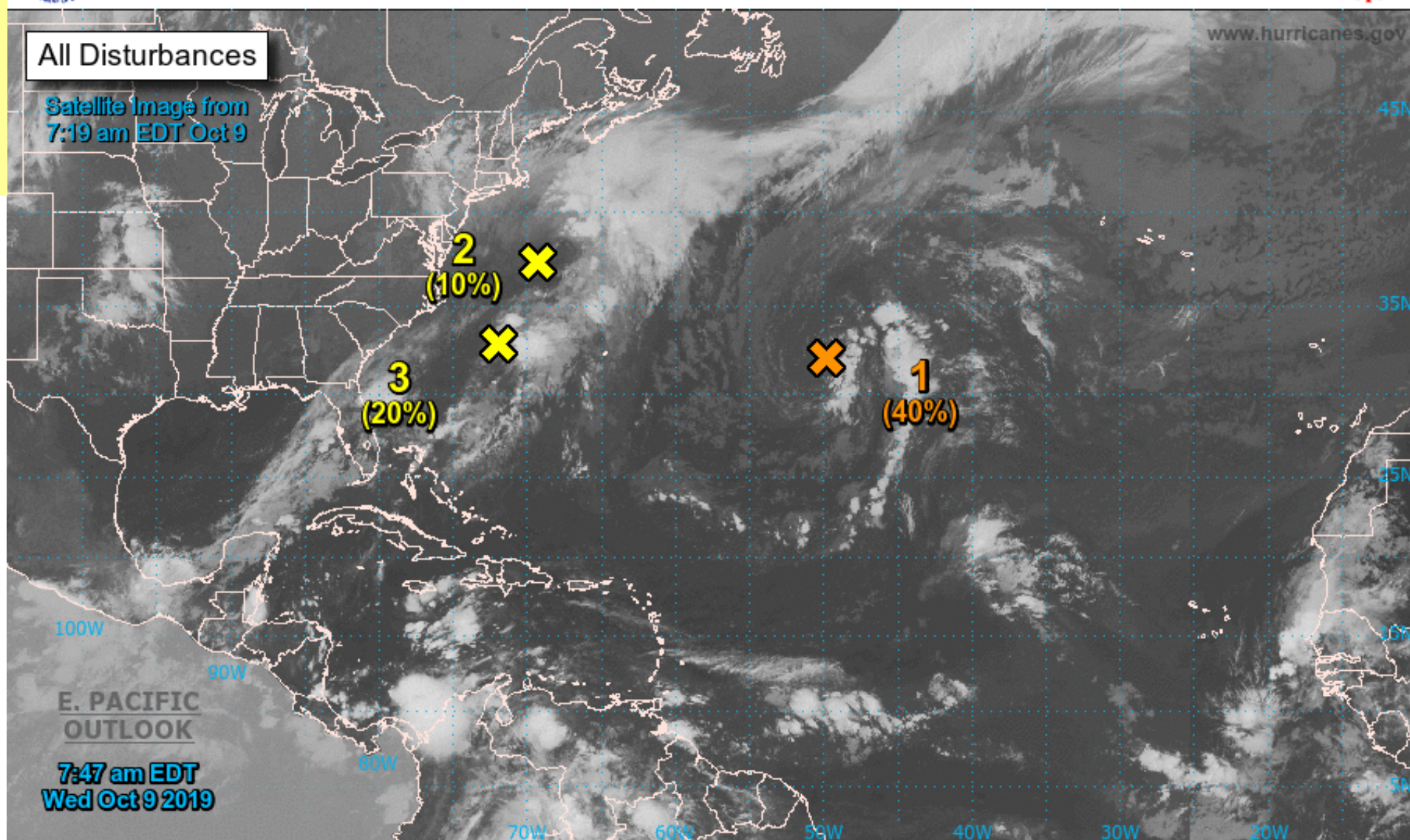


# Two-Day Graphical Tropical Weather Outlook

National Hurricane Center Miami, Florida



<https://www.nhc.noaa.gov/gtwo.php?basin=atlc&fdays=2>



Current Disturbances and Two-Day Cyclone Formation Chance:    < 40%    40-60%    > 60%

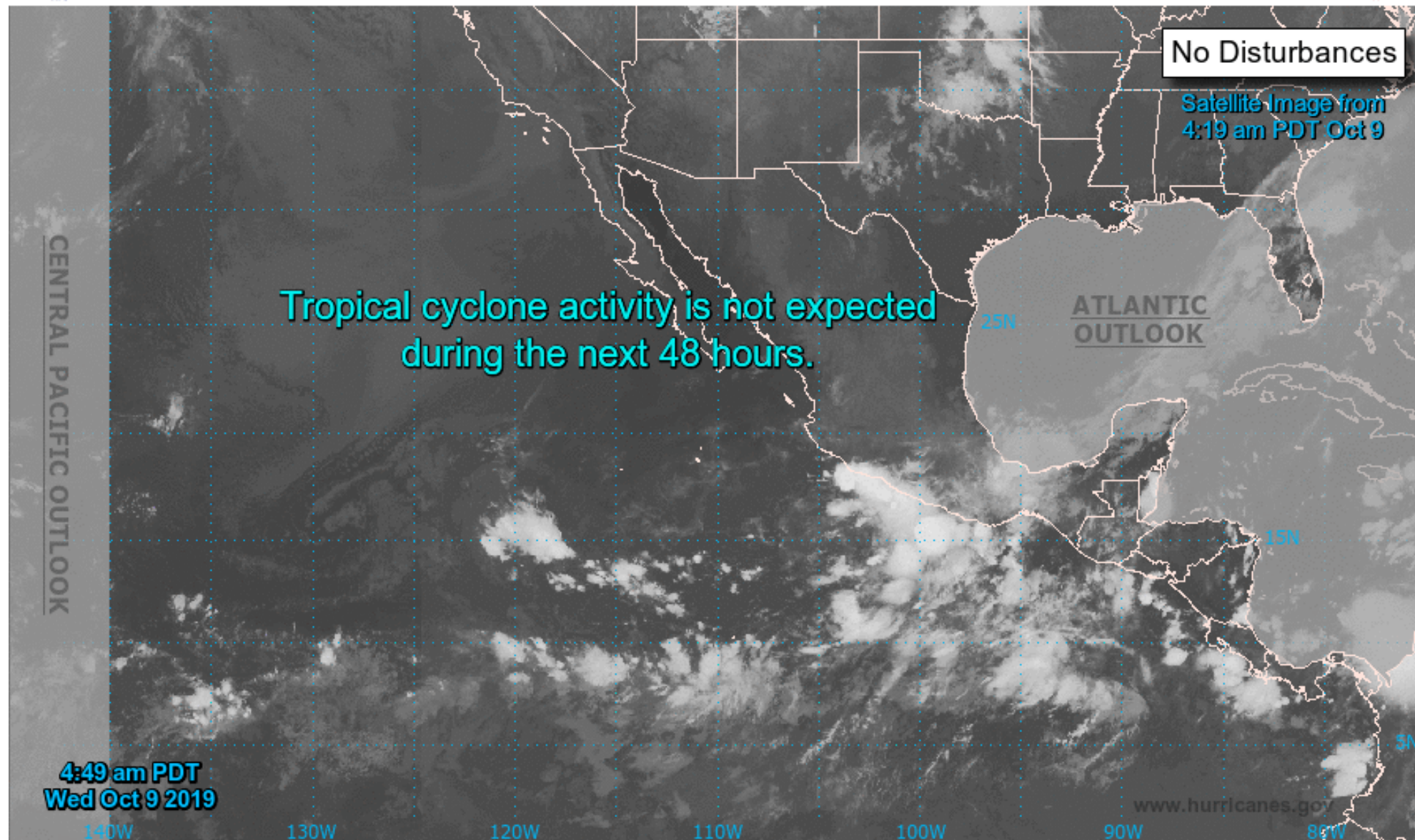
Tropical or Sub-Tropical Cyclone:    Depression    Storm    Hurricane

Post-Tropical Cyclone or Remnants



# Two-Day Graphical Tropical Weather Outlook

National Hurricane Center Miami, Florida



4:49 am PDT  
Wed Oct 9 2019

Current Disturbances and Two-Day Cyclone Formation Chance:

✕ < 40%

✕ 40-60%

✕ > 60%

Tropical or Sub-Tropical Cyclone:

○ Depression

⚡ Storm

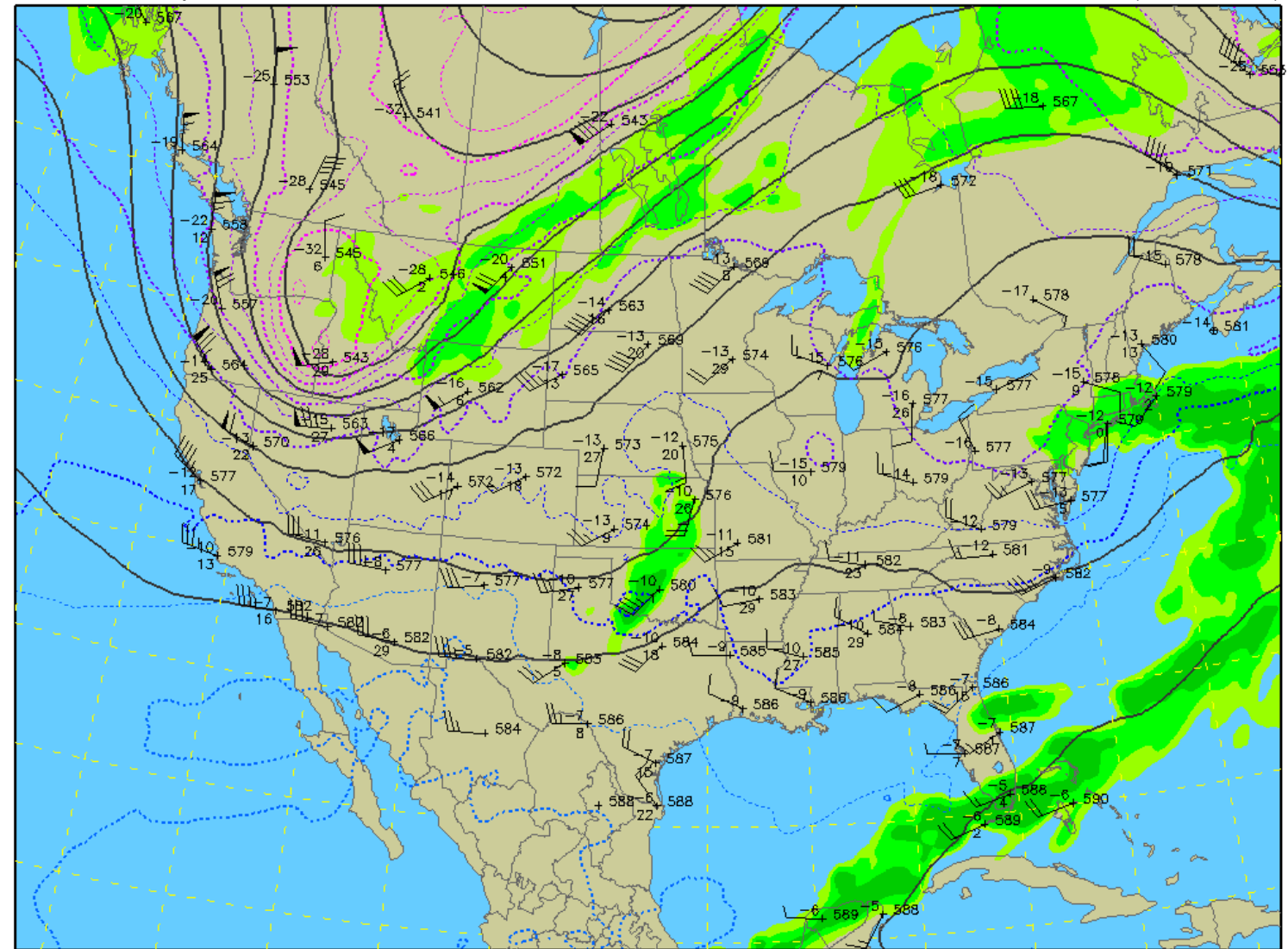
⚡ Hurricane

⊗ Post-Tropical Cyclone or Remnants

## 500 mb Heights (dm) / Temperature (°C) / Humidity (%)

0-hour analysis valid 1200 UTC Wed 09 Oct 2019

RAP (12z 09 Oct)



70 80 90  
(percent)

The good news

for us, typical fall weather.

this also might be the bad news  
for California fire danger.

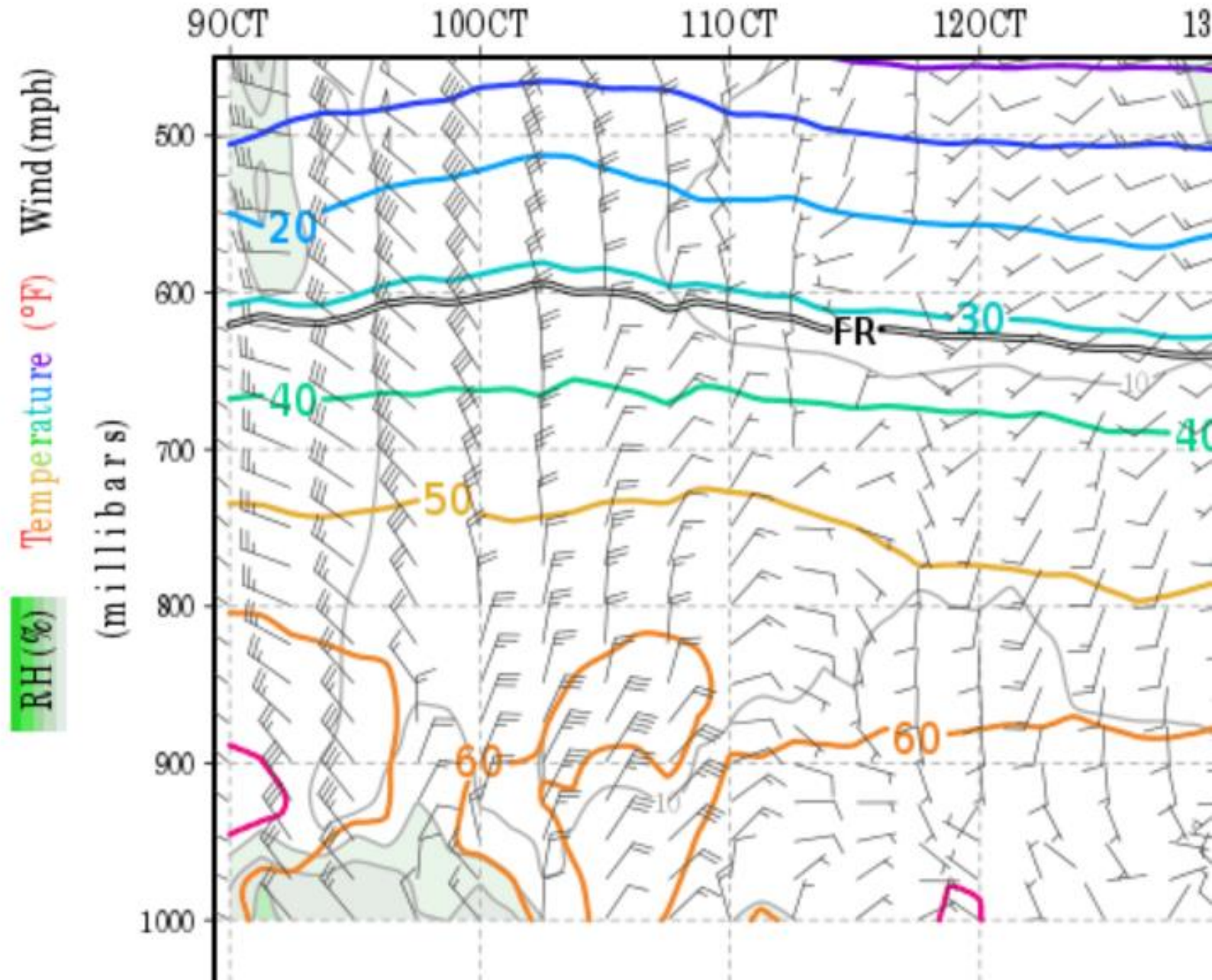
Next graphic:

[http://weather.rap.ucar.edu/upper/upaCNT\\_R\\_500.gif](http://weather.rap.ucar.edu/upper/upaCNT_R_500.gif)

# San Francisco

GR

Strong northeast winds in fall and winter set up the possibility/probability of fires in California.



<http://weather.rap.ucar.edu/upper/epz.gif>

Typical Fall Sounding for El Paso

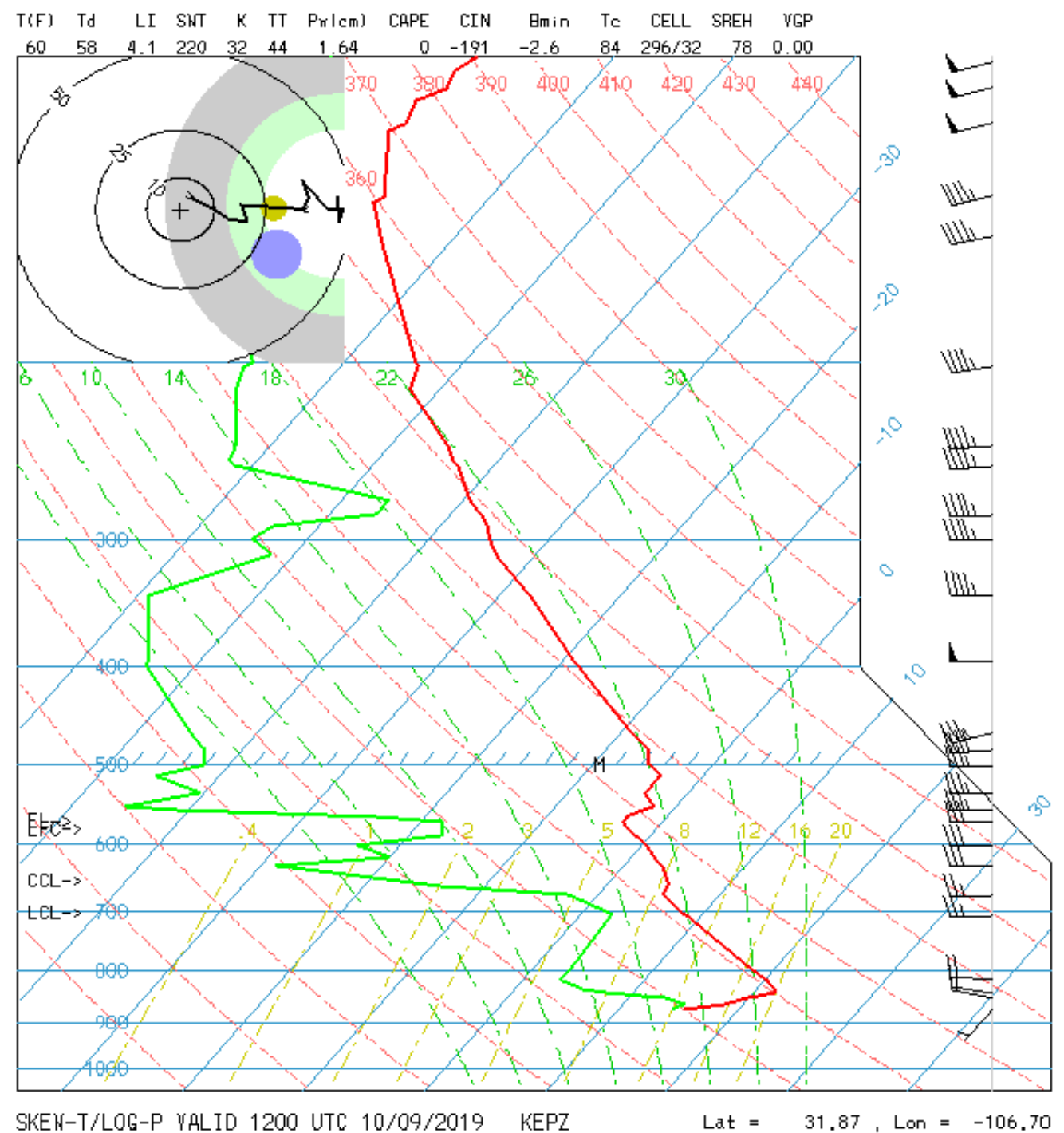
All Westerlies

Leaved tropopause

Dry Mid tropospheric air

Subsidence Inversion

Surface Inversion



980 FXUS64 KEPZ 091016 AFDEPZ

[Area Forecast Discussion](#) National Weather Service El Paso  
Tx/Santa Teresa [NM](#) 416 AM MDT Wed Oct 9 2019 .

SYNOPSIS... The disturbance and [moisture](#) that brought storms to the Borderland yesterday has moved east of the region with a much drier and more [stable](#) environment now in place over the region. As a result today it will be dry and seasonal. Winds will be stronger through the end of the week with breezy afternoons. Thursday night a cold [front](#) will blow in from the north. Friday and Saturday will be noticeably cooler with daily highs about 15 degrees cooler. Westerly winds and warmer weather will return Sunday and into next week.

<http://wxmaps.org/pix/elpnam.png>

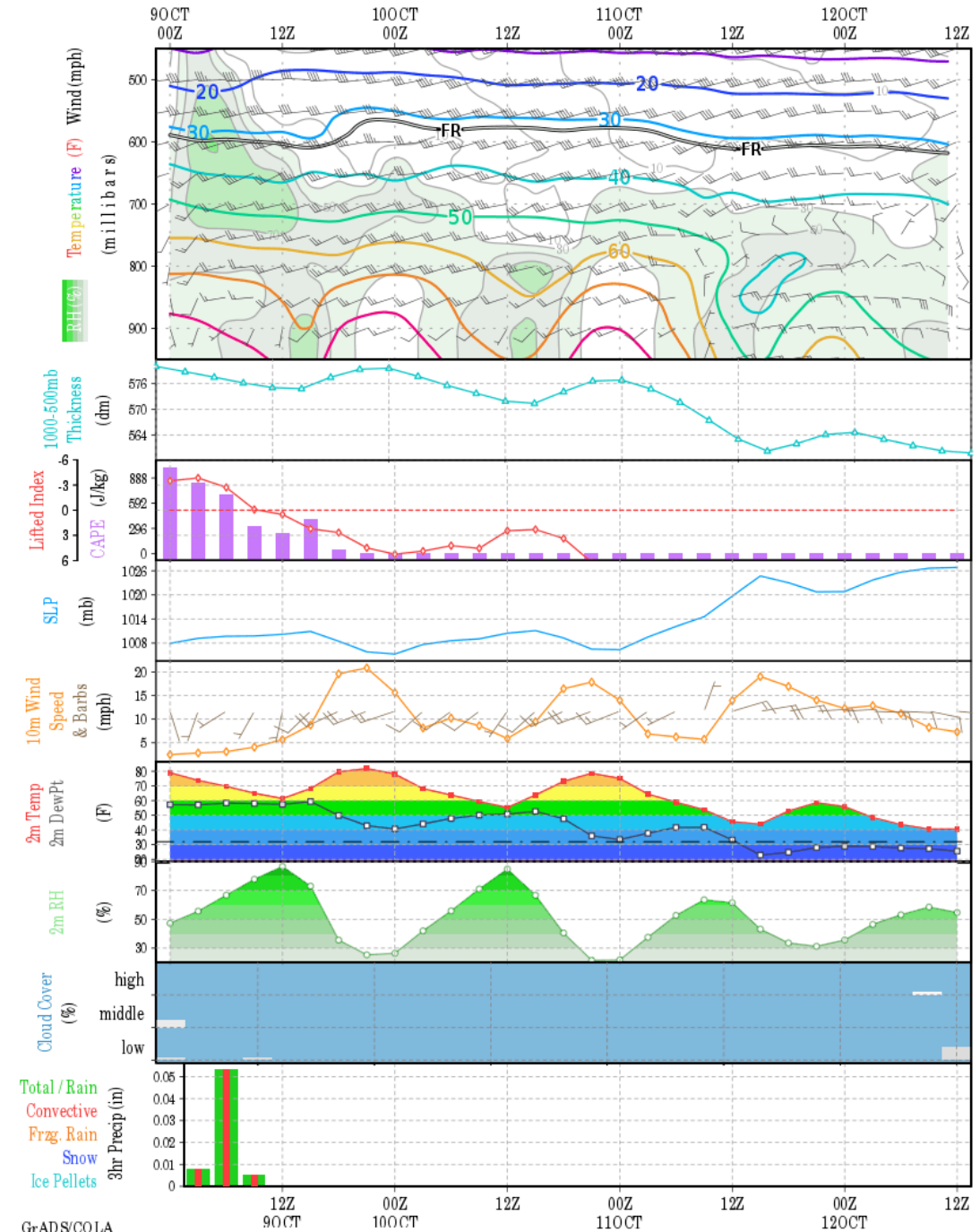
Last Week we discussed the forecast meteogram for El Paso.

This one is similar but based on a Mesoscale Forecast Model the North American Mesoscale: NAM

The NAM brings in the cold air from the East on Friday Morning.

## El Paso

NAM 0-84hr Forecast Meteogram for (106W, 32N)



## El Paso

<http://wxmaps.org/pix/elpgfs.png>

This is the 10-day forecast Meteogram based on the GFS, The Global Forecast System model.

Note the fall transition to cooler temperatures.

According to the GFS, the next system will arrive around the time of the next class.

