

Weekend Episode -- Lorena and Us

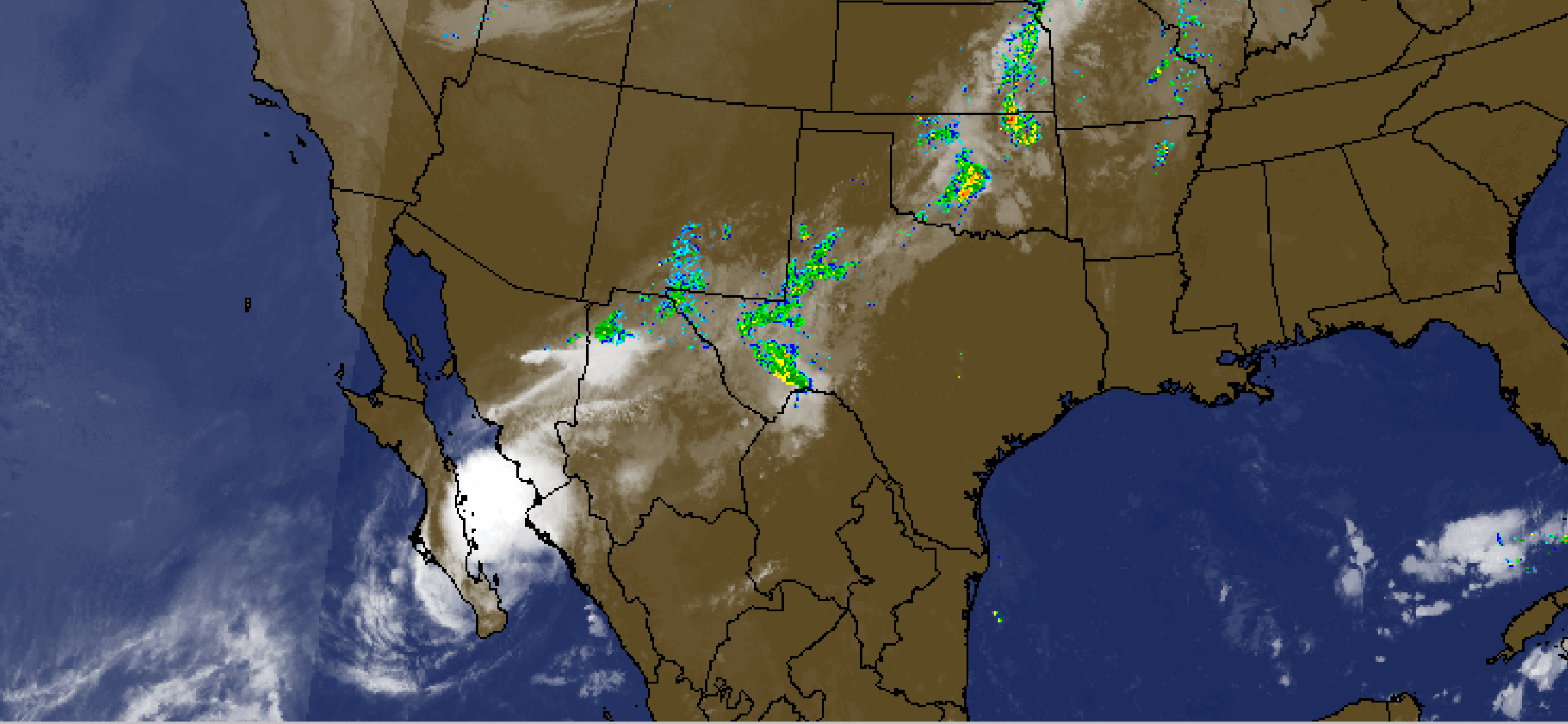


Bob Endlich

bendlich@msn.com

Weather, Climate and Climate Change—What the Data tell Us

24 Sep 2019



CON DERIVED IMAGE BASE REFLECTIVITY OVER NOAAPORT IR Sat 21 Sep 2019 14:15



Lorena has been a challenging system to forecast as the models have not had a good handle on its future track. The models this cycle have all shifted to the east and now show a landfall in mainland Mexico tonight or Sunday. The NHC track forecast has been adjusted to the right to be in better agreement with the latest model solutions, but this forecast still lies on the western side of the guidance envelope. If this model trend continues, additional shifts to the right might be needed. Based on this change, the Government of Mexico has issued a Tropical Storm Warning for a portion of northwestern Mexico.



National Weather Service National Headquarters

National Weather Service

weather.gov



[Home](#)

[Site Map](#)

[News](#)

[Organization](#)

Search for:



NWS



All NOAA



Local forecast by

"City, St" or Zip Code

[XML](#)

[RSS Feeds](#)

Area Forecast Discussion

Issued by NWS

[Current Version](#) | [Previous Version](#) | [Text Only](#) | [Print](#) | [Product List](#) | [Glossary Off](#)

Versions: [1](#) [2](#) [3](#) [4](#) [5](#) [6](#) [7](#) [8](#) [9](#) [10](#) [11](#) [12](#) [13](#) [14](#) [15](#) [16](#) [17](#) [18](#) [19](#) [20](#) [21](#) [22](#) [23](#) [24](#) [25](#) [26](#) [27](#) [28](#)

546

FXUS64 KEPZ 211144

AFDEPZ

[Area Forecast Discussion](#)

National Weather Service El Paso Tx/Santa Teresa [NM](#)

544 AM MDT [Sat](#) Sep 21 2019

.SYNOPSIS...

Deep southwesterly [flow](#) will bring increasing [moisture](#) into parts of the area today. While most of southwestern New Mexico will remain dry, [upper level moisture](#) will stream into Far West Texas, and some parts of South-Central New Mexico. Expect some showers in the El Paso area this morning and points east this morning, followed by a lull, and additional showers and thunderstorms later this afternoon and evening. The second batch of precipitation is most [likely](#) to stay just south and east of El Paso, with the highest [rainfall](#) amounts expected in Hudspeth County. The core remnant [moisture](#) of [Hurricane Lorena](#) will pass to the south of El Paso

The axis of heaviest [rainfall](#) looks like it will extend from somewhere between Bahia Kino and Ciudad Obregon through tonight, then up into northern Chihuahua Sunday morning, then clipping southern Hudspeth County Sunday afternoon, but without much of a [QPF](#) max. Area-wide, we may see higher [rainfall](#) amounts Monday Night into Tuesday over Southwestern New Mexico as a deep upper [trough](#) and embedded upper low moves into Arizona.

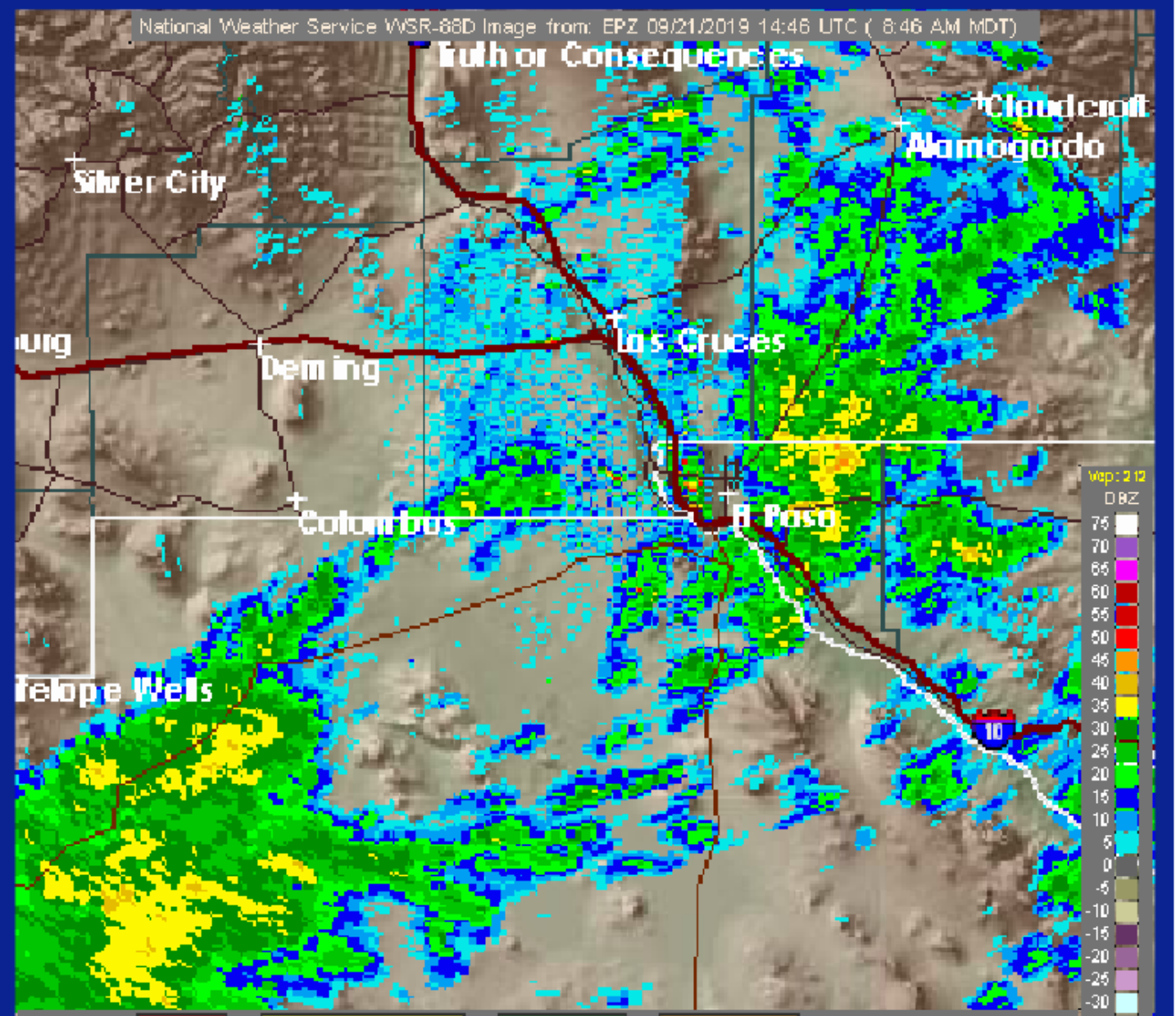
But let`s rewind a bit to today. Southwesterly flow covers most of the Desert Southwest, with tropical and leftover monsoonal moisture streaming up into parts of west Texas this morning. There remains a sharp west-to-east gradient in moisture, with PW values hovering around 0.75 inches in SW New Mexico, and up to 1.50 inches in far SE Hudspeth County. Most of the CAMS runs are not handling on-going precip in Chihuahua just southwest of El Paso very well (the 00Z UofAZ WRF-NAM is closest to reality), and focus precip too far to the east. Scattered showers are on track to move into Southern Dona Ana County and the El Paso area by about 6 AM.

<https://radar.weather.gov/ridge/radar.php?rid=EPZ&product=NCR&overlay=11101111&loop=yes>

NWS El Paso, TX

Composite Reflectivity

08:46 AM MDT Sat Sep 21 2019



Warnings: **Tornado** Severe Thunderstorm Flash Flood Special Marine

<https://radar.weather.gov/ridge/radar.php?rid=EPZ&product=NCR&overlay=11101111&loop=yes>

